

## Is the branch distribution box a primary distribution box



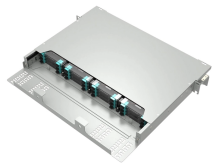
### Overview

A Main Distribution Board (MDB) is the primary control center for incoming power from the utility. It splits power into multiple branches and often includes a main breaker. Understand the key differences between distribution boards and boxes—functions, applications, safety, cost, and when to use each one. They may sound similar, but they have different roles in electrical. A distribution board is a fixed electrical panel that divides power into circuits with protection; a distribution box is more compact or portable, used for junctions or temporary setups.

## Is the branch distribution box a primary distribution box



A panelboard is a distribution assembly designed to divide an incoming electrical feed into numerous smaller branch circuits. Each circuit is protected by its own circuit breaker.



The primary function of a distribution box is to route electricity from the main supply to different circuits throughout a building. This ensures that all electrical appliances and systems ...



A distribution boxes acts as the load center and main distributor of electrical power within a building. Also called a distribution board, panel board, breaker panel, or electric panel, it is the ...



From the transformer's low-voltage side (0.4kV), power is distributed to a main distribution panel (primary distribution box).



What is the difference between a Distribution Box and a Distribution Board? The terms are often used interchangeably, but a Distribution Box usually refers to the enclosure housing the distribution board ...



**Main Distribution Boards vs. Sub-Distribution Boards**  
 A Main Distribution Board (MDB) is the primary control center for incoming power from the utility. It splits power into multiple branches ...



Although distribution boards and distribution boxes both help manage electricity, they're built for very different tasks. Understanding these differences can help you choose the right solution ...



These boxes are used in various places, such as residential areas or industries. They simply work by transferring electricity to specific locations, such as garages, parking lots, or other areas.



A distribution box is installed under the main distribution box, and a switch box is installed under the distribution box. Electrical equipment is installed under the switch box, forming a three ...



Distribution boards may be surface-mounted or flush. The former arrangement provides easier alteration or addition to wiring at a later date, but the latter arrangement might be neater, particularly for a ...

## Contact Us

For more information, pricing, or custom solutions, please contact us:

Website: <https://samastersbaseball.co.za>

Email: [sales@samastersbaseball.co.za](mailto:sales@samastersbaseball.co.za)

Phone: +27 63 874 2095

Address: 15 Innovation Drive, Technopark, Stellenbosch, 7600, South Africa

This document is for informational purposes only. Specifications subject to change without notice.

