

# Is a lighting box the same as a power distribution box



## Overview

Generally speaking, power distribution boxes are used to power high-power equipment, while lighting distribution box (small power distribution unit)es are used to power lighting equipment. The distribution box is a low-voltage power distribution device that assembles switchgear. Navigating the world of electrical distribution can be confusing, with terms like panelboard, switchboard, and distribution box often used interchangeably. However, each component plays a distinct and critical role in ensuring power is delivered safely and efficiently throughout a facility. They may sound similar, but they have different roles in electrical systems.

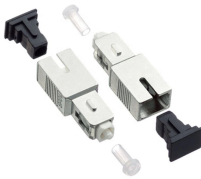
## Is a lighting box the same as a power distribution box



The differences between power cabinet distribution box and lighting cabinet are as follows: power cabinet distribution box is used for power supply of equipment, most of which are 380V; The lighting ...



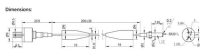
To understand the difference between the two, we must first know how much power they use. The lighting distribution box is generally 220V civil lighting distribution. The power distribution box is ...



1□ What is the difference between power distribution box and lighting distribution box? A: it's mainly the difference between power and lighting; The simple difference is: the power supply without zero line is ...



Navigating the world of electrical distribution can be confusing, with terms like panelboard, switchboard, and distribution box often used interchangeably. However, each ...



Power distribution box: the main load is power or lighting and power used together, as well as the large capacity distribution box that provides power for lighting load (beyond 63A level, non terminal ...



The distribution box is divided into power distribution box and lighting distribution box, which is the final equipment of the power distribution system.



Power distribution box and lighting distribution box (small power distribution unit) are two different types of distribution boxes in the power distribution system.



Power distribution box and lighting distribution box (small power distribution unit) are two different types of distribution boxes in the power distribution system.



The incoming line 380AVC/3 is mainly used for power distribution of motor and other power equipment. When the total incoming line current of lighting distribution is greater than 63A, it is also classified as ...



Many people think distribution boards and distribution boxes are the same, but they're not. They may sound similar, but they have different roles in electrical systems.



The distribution box is divided into power distribution box and lighting distribution box, which are the last level equipment of the distribution system. Both are strong electricity.

## Contact Us

For more information, pricing, or custom solutions, please contact us:

Website: <https://samastersbaseball.co.za>

Email: [sales@samastersbaseball.co.za](mailto:sales@samastersbaseball.co.za)

Phone: +27 63 874 2095

Address: 15 Innovation Drive, Technopark, Stellenbosch, 7600, South Africa

This document is for informational purposes only. Specifications subject to change without notice.

