

# **Integrated power supply for recessed lights**



## Integrated power supply for recessed lights



Lights hardwire directly into ceilings, no recessed can needed. Simply cut a hole to fit each light and run power. Their sleek, ultra-thin design seamlessly blends into any environment. Experience ...



California TITLE 24 Compliant 4" Recessed downlight fixture solution with integrated LED power supply and thermal management system combined in a single compact unit.



With compatibility across a wide range of legacy and modern phase-dimming products such as those made by Lutron and Leviton, these power supplies are an excellent choice for powering and ...



A complete system of revolutionary design, the V-Rail Spot brings best in class light levels with unmatched flexibility in placement and spacing.



Many homeowners opt to hire an electrician to do the job. But if you want to learn how to install Integrated recessed lighting yourself, check out our step-by-step instructions on How to Install ...



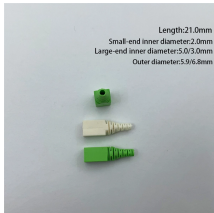
HALO QuickLink is a canless (no housing required) low ...



The ActiveLED Recessed Ceiling Can Lights configured without power supplies can be connected to the power supply of any Ringdale LED light or remote ActiveLED power supply, thereby reducing the ...



With InvisiDrive™ you simply make a small hole in the ceiling or wall, wire up its power supply, push back the spring-clips and pop it into place. It has a paintable front panel so it's discreet and easily ...



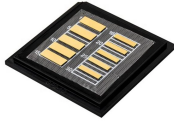
PureEdge Lighting develops and manufactures contemporary, specification grade architectural lighting which is energy efficient. PureEdge offers simple, elegant looking fixtures at an affordable price that ...



HALO QuickLink is a canless (no housing required) low voltage lighting system that powers multiple fixtures from a single remote power supply. Line voltage wire is only required at the remote power ...



Our 4ft LVLBY43T requires 3 inches of clearance but has an internal power supply allowing one to connect the light fixture directly to the "line voltage" (120-277 or 347VAC). Our LVLBY43T is ...



Shop through a wide selection of Recessed lighting at Amazon . Free shipping and free returns on Prime eligible items.



This simplifies LED lighting systems by combining two components into a single integrated unit in which you don't need to worry about compatibility issues. The ...



Specializing in residential and commercial recessed lighting, track lighting, LED, and turtle safe lighting.

## Contact Us

For more information, pricing, or custom solutions, please contact us:

Website: <https://samastersbaseball.co.za>

Email: [sales@samastersbaseball.co.za](mailto:sales@samastersbaseball.co.za)

Phone: +27 63 874 2095

Address: 15 Innovation Drive, Technopark, Stellenbosch, 7600, South Africa

This document is for informational purposes only. Specifications subject to change without notice.

