

# Installation of Distribution Box for Shopping Mall Lighting Circuits



## Overview

Done right, it ensures safety, compliance, and long-lasting performance. In this guide, we'll break down everything you need to know to install a distribution box correctly and confidently. Choose the right box based on environment (indoor/outdoor), load capacity, and. Plan of electrical installations for a shopping center; electrical installation; lightning; power outlets; single-line diagrams and load chart; typical details. Whether it is residential buildings, commercial facilities or industrial sites, the. 2d cad drawing of foot base connection and electrical installation details that include computation and schedule of loads with general notes with fetching wire and specifications, panel board details, riser diagram with legends and electric equipment details, cable details and dimensions details. This document provides guidance on electrical installations for commercial and public buildings. The main sections cover electrical service and supply, internal distribution, residential distribution. Arc-Fault Protection: Special circuits that detect dangerous sparking instantly cutting off power. Surge Defense: Guarding against voltage spikes from storms or grid issues. Ground-Fault Monitoring: Crucial in food areas with water risk. A vast choice of carefully

designed products make up solutions which in turn form coherent systems incorporating the latest technological innovations.

## Installation of Distribution Box for Shopping Mall Lighting Circuits



Install hidden socket grids at regular intervals (e.g., every 15-20 feet) rather than just where current fixtures stand. That extra foresight saves thousands when stores rearrange next year. ...



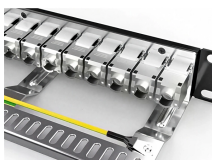
Learn how to install a distribution box safely and correctly. Covers wiring, placement, standards, and expert tips for a compliant setup.



Specific guidance is given for installations in offices, shopping complexes, schools, hotels, and multi-storey buildings. Design considerations include lighting and appliance loads, sub-circuits, ...



Legrand trunking is available in 3 colours (white, black and aluminium) and can incorporate LED lighting for indication or background lighting functions, which are ideal for shops.



The document outlines the design of the interior electrical installations for a shopping center located in Cuenca, detailing the objectives, demand calculations, and electrical supply requirements.



Lights, Switches, Action: The phrase “electrical drawing in shopping complex” isn't just about wires on paper; it's a dynamic plan that comes to life. Picture it as the director's script ensuring that each light ...



Reliable cable distribution boxes ensure safe, efficient power management for residential, commercial, and industrial systems. Learn installation and safety tips.



2d cad drawing of foot base connection and electrical installation details that include computation and schedule of loads with general notes with fetching wire and specifications, panel board details, riser ...



Malls & Shopping Centers - When it comes to lighting parking lots, illuminating individual stores, wiring HVAC systems and security alarms, and providing backup electricity for large shopping centers, a ...



Plan of electrical installations for a shopping center; electrical installation; lightning; power outlets; single-line diagrams and load chart; typical details.

## Contact Us

For more information, pricing, or custom solutions, please contact us:

Website: <https://samastersbaseball.co.za>

Email: [sales@samastersbaseball.co.za](mailto:sales@samastersbaseball.co.za)

Phone: +27 63 874 2095

Address: 15 Innovation Drive, Technopark, Stellenbosch, 7600, South Africa

This document is for informational purposes only. Specifications subject to change without notice.

