

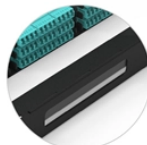
Installation of Aluminum Alloy Cable Trays in Syria

Pre-Terminated Patch Panel

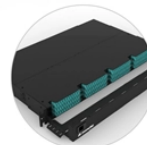
- Standard 19" width
- Max 144 fibers in 1U
- MPO/Fusion Dual-Purpose



Removable Cable Management Tray



Transparent Front Cover



High-Quality Matte Coated Steel

Overview

The Cable Tray Institute is making available the current edition of this practical guide for the proper installation of aluminum or steel cable tray systems. These guidelines will be useful to engineers, contractors, and maintenance personnel. From manufacturing to installation, Alfazal. This method statement covers the site installation of the cable tray & ladders and the requirements of checks to be carried out.

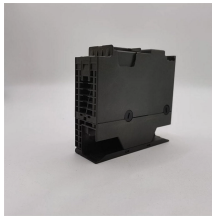
Installation of Aluminum Alloy Cable Trays in Syria



Cable tray installation must comply with specific technical standards to ensure electrical safety, system reliability, and long-term maintainability. This document outlines the key requirements for cable tray ...



Because of their lighter weight aluminum cable trays are easier to install than steel cable tray.



This document provides a method statement for installing cable trays and laying DC/AC cables for the 1.2MW Al Dahra PV project. It outlines the purpose, scope, materials, equipment, manpower, ...



This article explores the design, benefits, installation practices, and real-world applications of aluminum alloy cable trays, providing actionable insights for your next project.



The Cable Tray Institute is making available the current edition of this practical guide for the proper installation of aluminum or steel cable tray systems. These guidelines will be useful to engineers, ...



Alfazal Engineering offers expert installation services to ensure that your cable trays are securely mounted and correctly arranged. The installation process begins with a detailed layout plan.



Cable tray installation must comply with specific technical standards to ensure electrical safety, system reliability, and long-term maintainability. This document ...



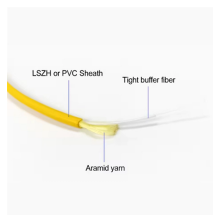
When fitting cable trays and their accessories, the products are cut on site to create changes of direction, adjust sections, etc. Damage can also occur during handling; as a result, both the ...



We at KMC fabricate cable tray systems from corrosion-resistant metal (low-carbon steel or an aluminium alloy) or from a metal with a corrosion-resistant finish (zinc or epoxy).



The Cable Tray system is installed in electrical rooms, plant rooms, and service corridors. This section will guide you through the necessary steps to ensure a successful installation.



Whether you're building a commercial setup or upgrading an industrial plant, proper cable tray installation ensures neat wiring, safe access, and easy maintenance. But before you lay the first ...

Contact Us

For more information, pricing, or custom solutions, please contact us:

Website: <https://samastersbaseball.co.za>

Email: sales@samastersbaseball.co.za

Phone: +27 63 874 2095

Address: 15 Innovation Drive, Technopark, Stellenbosch, 7600, South Africa

This document is for informational purposes only. Specifications subject to change without notice.

