

# Installation Requirements for Main Switch of Distribution Box



## Overview

Check for proper IP/NEMA ratings and material quality. Ensure safe placement: install in dry, accessible areas with good ventilation and at appropriate height (typically ~1. Practice good wiring: secure grounding, neat cable management, proper insulation, and correct wire gauge and breaker. The National Electrical Code (NEC) provides comprehensive safety standards for electrical installations, including requirements for electrical panels (main service panels and subpanels or breaker box). NEC Article 408 covers switchboards, switchgear, and Panelboards installation and applications. "Getting your distribution box installation right isn't just about passing inspection - it's about. These instructions define the areas in which assistance may be given to a primary customer to coordinate the customer's and DTE Electric systems, to increase the operating safety of high voltage equipment.

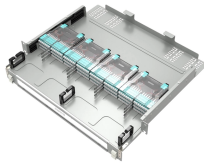
## Installation Requirements for Main Switch of Distribution Box



Learn how to install a distribution box safely and correctly. Covers wiring, placement, standards, and expert tips for a compliant setup.



Restore power to the installation area by turning on the electrical circuit at the main panel. Test each circuit breaker or fuse by switching it on and off to verify proper operation. Use a voltage tester or ...



These requirements apply to customer generation and energy storage systems that are designed to parallel and backfeed (e.g., PV) into the PG& E system or for emergency or backup purposes only. ...



Understanding the key components of a distribution box helps you make informed decisions about installation and maintenance. Each element plays a specific role in ensuring safe ...



The document provides a method statement for installing electrical distribution boards (DB), sub-main distribution boards (SMDB), and main distribution boards ...



Box installation: Make sure that Distribution box has been correctly installed and fixed. Material preparation: Prepare the required circuit breakers, wires, wiring ties and other materials, and ...



Whether you are an electrical contractor or a construction brigade, knowing how to properly and safely install distribution boxes is the basis of ...



This document contains the requirements and recommendations for loadbreak switchgear and meter compartments intended for installation as service equipment on the DTE Electric system.



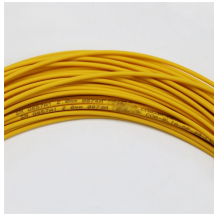
The Heart of Your Electrical System Think of your home's distribution box as the Grand Central Station of your electrical system. Just like travelers need clear pathways and safety protocols, your electrical ...



The National Electrical Code (NEC) provides comprehensive safety standards for electrical installations, including requirements for electrical panels (main service panels and subpanels or breaker box).



Standard wall switch height is 4 feet from the top of the flooring to the bottom of the box. Metal boxes are required when using metal raceways to run wiring, both as an anchor for the conduit ...



Sections 1926.402 through 1926.408 contain installation safety requirements for electrical equipment and installations used to provide electric power and light at the jobsite.

## Contact Us

For more information, pricing, or custom solutions, please contact us:

Website: <https://samastersbaseball.co.za>

Email: [sales@samastersbaseball.co.za](mailto:sales@samastersbaseball.co.za)

Phone: +27 63 874 2095

Address: 15 Innovation Drive, Technopark, Stellenbosch, 7600, South Africa

This document is for informational purposes only. Specifications subject to change without notice.

