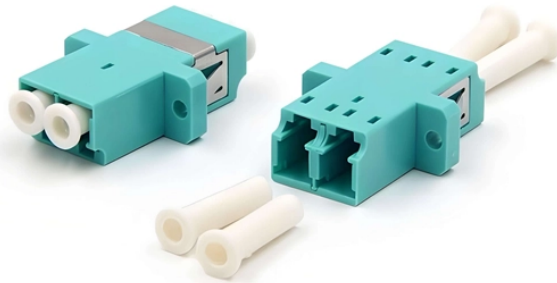


Installation Requirements for Intelligent Power Distribution Cabinets in Exhibition Halls



Installation Requirements for Intelligent Power Distribution Cabinet



Before an exhibition or show begins, the entire electrical installation must be inspected and tested to ensure compliance with BS 7671. Daily visual checks should identify potential hazards ...



Managing and installing a rack power distribution unit (PDU) has never been easier than with the EL2P PDU. Designed to simplify deployment and take stress out of power distribution, this intelligent PDU ...



These massive spaces host a variety of events—from tech expos to industry trade fairs—and require robust, efficient, and safe power distribution systems. Here's a look at the key ...



This standard is applicable to indoor or outdoor exhibition hall trench intelligent power distribution connection systems with a rated voltage AC not exceeding 380V and a frequency of 50Hz.



Power conditioning and distribution cabinet that offers the benefits of a custom-tailored system while offering the convenience and cost savings of a pre-packaged, factory-tested solution.



Solution Overview: A Distributed Intelligent Power Distribution Architecture To meet these requirements, a customized distributed low-voltage power distribution network was developed, ...



Kabeldon low voltage distribution system is truly easy to work with. The modularity, clear markings and unobstructed visibility make installation fast and flexible.



To ensure a reliable power supply during an event, it is essential to optimize the electrical distribution from the design phase. This involves accurately sizing power needs, carefully selecting ...



Before an exhibition or show begins, the entire electrical installation must be inspected and tested to ensure compliance with BS 7671. Daily visual ...



The National Electrical Code (NEC) outlines and defines the requirements for the permanent and temporary power distribution equipment installation for live entertainment.



For convention centers, the electrical blueprint must address not only basic power distribution but also the integration of advanced control systems, emergency power backups, and energy-efficient lighting ...

Contact Us

For more information, pricing, or custom solutions, please contact us:

Website: <https://samastersbaseball.co.za>

Email: sales@samastersbaseball.co.za

Phone: +27 63 874 2095

Address: 15 Innovation Drive, Technopark, Stellenbosch, 7600, South Africa

This document is for informational purposes only. Specifications subject to change without notice.

