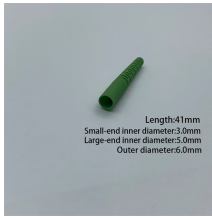


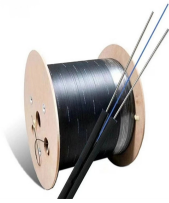
Inductor Requirements for Optical Modules



Inductor Requirements for Optical Modules



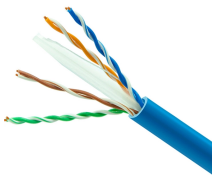
MPS provides compact and comprehensive solutions that feature high efficiency and low ripple characteristics to meet the design requirements of high-speed optical module power supply solutions.



This paper demonstrates switching DC/DC buck converter and data-converter designs optimized for optical modules where thermal limitations and space constraints are the most important factors.



This article explores MPS optical module solutions to meet the design requirements of high-speed optical communication as well as different laser diode applications.



The dc-dc regulator design flow = much more complex process and with design iterations included ... takes over 2.8 times as many steps to complete versus module design.



This article introduces the MPM38222, a high-performance, 6V input, dual 2A power module, which is suitable for optical modules and other space-limited applications.



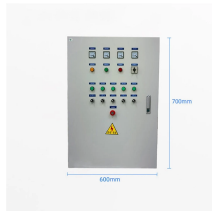
Broadband inductors are designed & manufactured with the most stringent optical communications requirements in mind. KYOCERA AVX's broadband inductor technologies are ideal for use in mobile ...



TDK Corporation (TSE: 6762) has expanded its PLEC69B series (1.2 x 0.6 x 0.95 mm - L x W x H) of thin-film inductors, used for separating the data signal from the power in optical transceivers in AI ...



TDK Corporation (TSE: 6762) has expanded its PLEC69B series (1.2 x 0.6 x 0.95 mm - L x W x H) of thin-film inductors, used for separating the data signal from the power in optical ...



Using Hamamatsu, assembly technology, optical technology and circuit technology, we can suppress optical and electrical crosstalk between channels and achieve superior light-shielding characteristics ...



Systems designers are looking for step-down regulators that can accommodate both OSFP and QSFP-DD modules form factors. Small design size, thin height, and great efficiency are key design ...



By operating from a single 2.7V to 5.5V input power rail and integrating the controller, gate driver, power inductor, and MOSFETs, these mini modules are optimized for space-constrained applications like ...

Contact Us

For more information, pricing, or custom solutions, please contact us:

Website: <https://samastersbaseball.co.za>

Email: sales@samastersbaseball.co.za

Phone: +27 63 874 2095

Address: 15 Innovation Drive, Technopark, Stellenbosch, 7600, South Africa

This document is for informational purposes only. Specifications subject to change without notice.

