

If the duct and fiber optic cable are not laid in the same trench



Overview

Do not allow the duct to undulate in the trench - apply tension if necessary to straighten routes. One important aspect of direct bury microduct is to inspect or test the route before reinstating the ground surface. This is much more straightforward if the duct has a pull-cord. A practical, engineering-focused guide to planning and installing underground fiber optic cables with the right cable structure, trench design and protection level for long-life, low-risk networks. Underground cables are pulled in conduit that is buried underground, usually 1-1.2 meters (3-4 feet) deep to reduce the likelihood of accidentally being dug up. In extreme cold climates, cables may need to be buried at greater depths where there temperatures are colder and frost penetrates to. The Fiber Optic Association, Inc. It forms a critical backbone for modern communication networks across both urban and rural environments. When using pulling equipment to install cable, measures should be taken to ensure that. The guide outlines best practices for cable placement in conduit, innerduct, handholes, and manhole structures and is intended for use by personnel with prior experience in planning, engineering, or placement of underground cable.

If the duct and fiber optic cable are not laid in the same trench



Each direct-buried single-conductor cable must be located in close proximity in the trench to the other single-conductor cables in the same parallel set of conductors, including equipment ...



A new OFS technical guide covers comprehensive steps for installation of fiber-optic cable in underground plant.



Where no physical barrier exists, no duct or cable shall be laid within a distance of 600mm (24 inches) measured horizontally, nor cross within a distance of 300mm (12 inches) measured vertically from ...



This article covers the basic guidelines for installation of fiber optic cable in underground plant. It is intended for personnel with prior experience in planning, engineering, or placement of underground ...



The document outlines safety precautions and methodologies for the installation of Optical Fiber Cables (OFC), emphasizing the importance of safety measures, proper trenching techniques, and equipment ...



Learn how to install underground fiber optic cables safely and efficiently. Explore trenching, conduit selection, direct burial methods, splicing, termination, testing, and solutions for ...



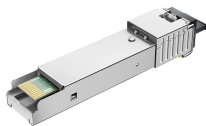
Confidently choose between direct burial, duct, trough and micro-duct for your underground fiber project. This practical guide covers cable structures, trench depth, mechanical ...



Read our guide to the do's and don'ts of installing direct bury microduct for fiber.



This document discusses techniques for trenching and laying optical fiber ducts. It describes excavating trenches to a nominal depth of 165cm and laying permanently lubricated HDPE ducts in the trenches.



Do not install a fiber optic cable in a conduit or duct that already contains cabling, regardless of the cable type. Existing or new empty ductwork can be modified to accept several different installations by the ...

Contact Us

For more information, pricing, or custom solutions, please contact us:

Website: <https://samastersbaseball.co.za>

Email: sales@samastersbaseball.co.za

Phone: +27 63 874 2095

Address: 15 Innovation Drive, Technopark, Stellenbosch, 7600, South Africa

This document is for informational purposes only. Specifications subject to change without notice.

