

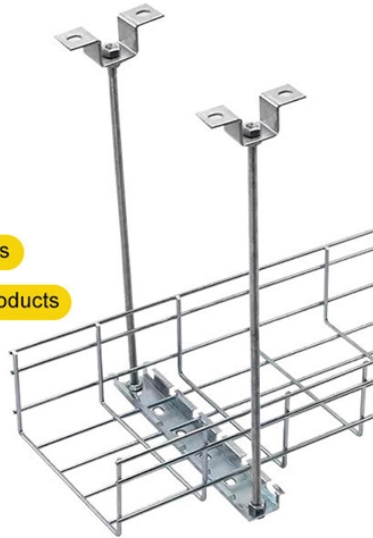
# Huawei Switch Optical Port Parameters

## STAINLESS STEEL WIRE MESH

Long-lasting and durable

Comprehensive specifications

Customized non-standard products



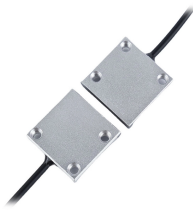
## Overview

This section describes how to configure attributes for an optical interface. A high-bandwidth interface on the device can be configured as. Optical modules are widely used in switches, network interface cards (NICs), routers, and other communication devices. During use, reading optical module information helps understand its real-time operating status, enabling faster troubleshooting of link abnormalities. The specific viewing information is as follows: This document describes all the configuration commands of the device, including the command function, syntax, parameters, views, default level, usage guidelines, examples, and related commands. Execute the command, display.

## Huawei Switch Optical Port Parameters



The following uses the Moduletek SFP-10G-LR module connected to a Huawei S6700 switch as an example to introduce how to read information of the connected optical module on a Huawei switch.



Commands provided in this section and all the parameters in the commands are supported by all switch models by default, unless otherwise specified. For details, see specific commands.



Use the command `display transceiver` to view the optical module information of all optical ports, and use the command `display transceiver interface interface-type interface-number` to view the ...



The following picture is the optical module information queried on the Huawei switch, which is marked with the Chinese translation of the Optical Module English parameters for easy ...



Huawei switches using non-certified optical module may not be able to read the information, can not guarantee the accuracy of the information read, recommend the use of Huawei certified optical ...



To connect a fiber, align the optical connector with the optical port and gently insert the optical fiber into the port. To remove a fiber, press the clip on the connector and pull the fiber out.



Both the local and remote interfaces do not need to have optical modules installed. The 40GE interface can be connected to four 10GE interfaces on the remote device using a 1-to-4 40GE ...



If an optical module is installed in a running switch, you can run the display transceiver command to view parameters of the optical module, including the center wavelength, transmission distance, fiber types ...



The following picture is the optical module information queried on the Huawei switch, which is marked with the Chinese translation of the Optical ...



Configuring ports on a Huawei switch is a fundamental yet critical task for network administrators. Whether you're setting up a new network segment or troubleshooting connectivity ...



This article summarizes several solutions for using optical modules with switches and common problems encountered during usage, along with specific solutions.

## Contact Us

For more information, pricing, or custom solutions, please contact us:

Website: <https://samastersbaseball.co.za>

Email: [sales@samastersbaseball.co.za](mailto:sales@samastersbaseball.co.za)

Phone: +27 63 874 2095

Address: 15 Innovation Drive, Technopark, Stellenbosch, 7600, South Africa

This document is for informational purposes only. Specifications subject to change without notice.

