

How wide should the busbar cable tray be



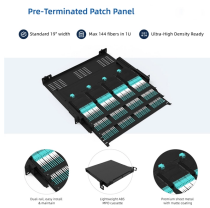
Overview

Standard electrical cable tray dimensions for width typically range from 50 millimeters to 1000 millimeters in metric systems, or from 6 inches to 36 inches in imperial measurements. The right cable tray sizing calculator helps engineers turn cable schedules into a verified tray width and fill check before material ordering and site installation. IEC 61537 covers cable tray and cable ladder systems for the support and accommodation of cables, while NEC Article 392 governs cable. National Electrical Code (NEC) specifies the capacities of cables rated at 2000 volts or less in cable trays. Single Conductor Cables enable cables of equivalent construction & conductor material to be functioned at varying maximum ampacities based on how the cables are physically placed in ladder. We offer highly efficient HT/LT Bus Duct and rising mains. This is offered with both indoor and outdoor construction with IP42/55 degree of protection. ATS designs bus duct systems in. Many users focus only on tray width, assuming that a wider tray automatically means higher capacity. The dimensional specifications directly influence the tray's load-bearing capacity.

How wide should the busbar cable tray be



Use this cable tray sizing calculator to check fill %, select tray size, and comply with IEC 61537 & NEC 392 with formulas, example and checklist.



The entire amount of the cross-sectional areas for all of the single conductor cables that are going to be positioned in the cable tray needs to be equal to or less than the permissible cable ...



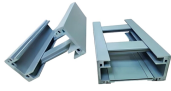
How to size cable tray according to IEC standard and BS standard The cable tray size is described in two dimensions: width and height. Calculating ...



In this blog, we'll walk you through the top five cable tray sizes that help maximize efficiency. We'll back it up with some data and highlight the key benefits, showing why these sizes ...



Cable Tray Conductor Sizing Guide Size conductors installed in cable tray with NEC 392, NEC 310.16, tray fill, ampacity adjustment, voltage-drop checks, grounding, and IEC design cross ...



Explore standard sizes by tray type, understand width and depth limits, and see how to calculate and choose compliant cable tray sizes for real projects.



Explore standard sizes by tray type, understand width and depth limits, and see how to calculate and choose compliant cable tray sizes for real projects.



Ladder cable tray is available in widths of 6, 9, 12, 18, 24, 30, 36, 42 and 48 inches with rung spacings of 6, 9, 12 or 18 inches. Note that wider rung spacings and wider cable tray widths decrease the overall ...



Learn how to calculate the perfect cable tray size and dimensions for your electrical project. This guide covers load capacity, fill ratios, and industry standards.



Solid bottom cable tray: The total combined diameters of the cables should not exceed 90% of the available width of the cable tray. This ensures adequate space for cable placement, reduces the risk ...



Selecting the appropriate electrical cable tray dimensions is a critical decision that directly impacts the safety, efficiency, and longevity of any industrial or commercial electrical installation. ...



Cable tray are being fabricated from high quality steel and specified thickness of galvanised sheet as per requirement of customer and relevant IS & IEC. Perforated Cable tray up to 1800 mm wide

Contact Us

For more information, pricing, or custom solutions, please contact us:

Website: <https://samastersbaseball.co.za>

Email: sales@samastersbaseball.co.za

Phone: +27 63 874 2095

Address: 15 Innovation Drive, Technopark, Stellenbosch, 7600, South Africa

This document is for informational purposes only. Specifications subject to change without notice.

