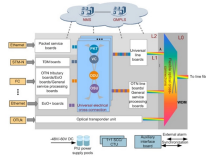


How to secure cables entering the distribution box



How to secure cables entering the distribution box



Conductors entering boxes, cabinets, or fittings shall be protected from abrasion, and openings through which conductors enter shall be effectively closed. Unused openings in cabinets, boxes, and fittings ...



What are the requirements for NM-cables entering an electric panel box? NM-cables must be securely fastened where they enter an electric panel, so that tugging on a cable from outside the box will not ...



As a DIYer, it can be intimidating working with metal electrical boxes. But I'm going to show you a common mistake that people make when wiring them so that you can be confident in ...



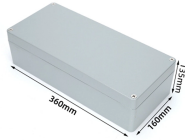
Securing and supporting requirements for NM cable are found in Section 334.30. The general rule for NM cable is to secure the cable within 12 inches of the box and every 4.5 feet thereafter.



Use cord seals or strain relief connectors for any cables entering the box without conduit. Consider Tamper Resistance: If unauthorized access is a concern, you can use tamper-resistant ...



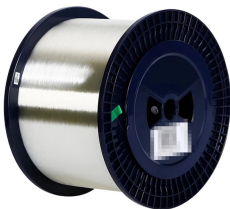
Non-metallic cable must be secured within 12 inches of every box, cabinet, or fitting where the cable terminates into an enclosure. Along the open run between enclosures, the cable must be secured at ...



How do I protect the cables entering the box? The inspector told me I need to either move the NM cable on the right to left hole OR install a metal strap to protect the cable. I want to go with ...



Direct-buried conductors and cables such as Types MC, UF, and USE installed underground must be protected from damage per 300.5 (D) (1) through (4). For example, underground conductors and ...



Learn how to install a distribution box safely and correctly. Covers wiring, placement, standards, and expert tips for a compliant setup.



§ 111.81-3 Cables entering boxes. Each cable entering a box or fitting must be protected from abrasion and must meet the following: (a) Each opening through which a conductor enters must be closed. (b) ...

Contact Us

For more information, pricing, or custom solutions, please contact us:

Website: <https://samastersbaseball.co.za>

Email: sales@samastersbaseball.co.za

Phone: +27 63 874 2095

Address: 15 Innovation Drive, Technopark, Stellenbosch, 7600, South Africa

This document is for informational purposes only. Specifications subject to change without notice.

