

# How to network a switch with an optical port



## Overview

Most modern fiber-enabled network switches require an SFP transceiver module featuring a duplex (two strand) multimode OM3 or duplex single mode OS2 connection with LC connectors. Direct attach cables with pre-terminated SFP connections may also be used. This design enables end-to-end optical signal transmission, avoiding the conversion between electrical and optical signals at the switch port level. In this article, we'll explain how to connect multiple Ethernet switches using fiber optic cables and the equipment required for this to work. Simply put, it defines how network. For those who are new to the world of optical cables or simply looking to connect one to a switch, this step-by-step guide will provide you with all the necessary information and instructions to successfully complete the process. Whether you're an audiovisual enthusiast or someone seeking to.

2- How to physically connect the new fibre to the main network switch in the house?

(see bubble #1?

) 3- How to safely run the optic fibre in the garden?

How deep to burry it?

what sort of conduit should I use to protect it?

How to best manage the bend of the fibre without braking it?

Sorry for this. A passive optical network (PON) or Gigabit Passive Optical Network (GPON) is a point-to-multipoint (P2MP) network that uses a combination of active transmission equipments and passive cable components to provide network connectivity to end user's devices.

## How to network a switch with an optical port



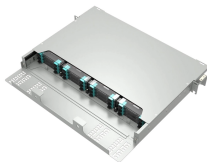
This guide will walk you through the process of connecting a switch to a fiber optic network, covering the necessary components, steps, and considerations to ensure a smooth setup.



Can two switches with optical ports be directly connected by optical fiber? Yes, the main line of the optical fiber LAN is a direct switch, followed by a router.



A Cisco Catalyst PON Series OLT carries abundant services and flexible network mode over one optical network, and is especially suitable for networks such as enterprise LAN, video ...



Application Guide: Connecting Fiber-ready Network Switches Fiber optic cabling is increasingly used to connect network switches and other datacom equipment, especially in long-distance and mission ...



Mishandling these sensitive optical components can lead to port damage, link failures, or even permanent transceiver failure. This guide provides detailed, professional steps to ensure you ...



Most importantly, any upgrades and advancements in networking technology can be easily accommodated by existing fiber infrastructure, offering scalability for future network ...



Switches come in three types: those with purely Ethernet ports, those with purely optical ports, and those with a combination of both. Port types are limited to two: optical and Ethernet. ...



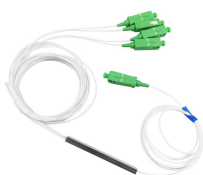
The objective is to run 1 or 2 additional optic fibre from the main switch down to the shed in the back of my garden and down to the garage as well. Here's a quick sketch to present the layout ...



For those who are new to the world of optical cables or simply looking to connect one to a switch, this step-by-step guide will provide you with all the necessary information and instructions to ...



A Cisco Catalyst PON Series OLT carries abundant services and flexible network mode over one optical network, and is especially suitable for ...



Discover what an all-optical Ethernet switch is, how it works, and the key benefits it brings to modern networks, from higher bandwidth to lower latency.

## Contact Us

For more information, pricing, or custom solutions, please contact us:

Website: <https://samastersbaseball.co.za>

Email: [sales@samastersbaseball.co.za](mailto:sales@samastersbaseball.co.za)

Phone: +27 63 874 2095

Address: 15 Innovation Drive, Technopark, Stellenbosch, 7600, South Africa

This document is for informational purposes only. Specifications subject to change without notice.

