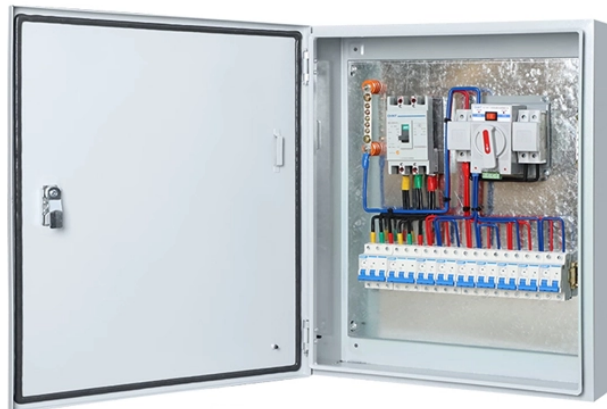


How to configure the splitter in FTTH



Overview

Learn how to properly install 1xN PLC splitters in FTTH networks to ensure stable optical performance. At the heart of this balance are decisions about split levels, split ratios, and the type of splitter technology employed. Splitters used in a GPON system are passive. To deploy a successful FTTH network, one must consider factors such as the choice of splitter, splitting level, and splitting ratio. By dividing a single optical signal from a central Optical Line Terminal (OLT) into multiple outputs for Optical Network. California Proposition 65, officially known as the Safe Drinking Water and Toxic Enforcement Act of 1986, was enacted in November 1986 with the aim of protecting individuals in the state of California and the state's drinking water and environment from excessive exposure to chemicals known to the. PLC splitters are a core element of FTTH access networks. In both traditional ODN and Quick ODN architectures, many field issues are not caused by the.

How to configure the splitter in FTTH



explains how optical splitters enable FTTH, their types (FBT vs. PLC), key ratios, and how they integrate with LINK-PP optical modules for a seamless ...



Different ratio optical splitters may exhibit varied performance in your network, influencing the split ratio design in FTTH networks. For FTTH networks and other PON setups, the star ...



This guide includes task-based instructions that describe how to configure, use, and troubleshoot the equipment with OTDR module. We are assuming that you have basic computer and mouse/track ball ...



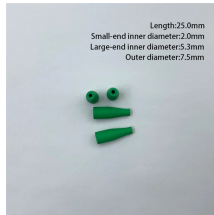
explains how optical splitters enable FTTH, their types (FBT vs. PLC), key ratios, and how they integrate with LINK-PP optical modules for a seamless network.



Designing FTTH isn't just "drop fiber to homes and done". You've got to strategically choose how many you split (split ratio), and where you split (split level), in tandem with understanding your geography, ...



Learn how to properly install 1xN PLC splitters in FTTH networks to ensure stable optical performance.



Learn how to design an efficient FTTH network by optimizing split levels and split ratios. Get deployment strategies for high-performance fiber networks.



You use splitters in the field to allow you to share a single backbone fiber among up to 32 houses. You would rarely use a 1-32 splitter (maybe in a multiple unit building), and instead cascade the splitters ...



To deploy a successful FTTH network, one must consider factors such as the choice of splitter, splitting level, and splitting ratio. This guide delves into these pivotal aspects, offering a ...



Learn about optical splitter split ratios (1:N, 2:N), centralized vs. cascaded architectures, and how to choose the right setup for FTTH PON networks.



Choosing the right FTTH splitter is the first step to start the splitting level and ratio design. There are two types of optical splitters in our current FTTH network design—PLC splitters and FBT splitters.

Contact Us

For more information, pricing, or custom solutions, please contact us:

Website: <https://samastersbaseball.co.za>

Email: sales@samastersbaseball.co.za

Phone: +27 63 874 2095

Address: 15 Innovation Drive, Technopark, Stellenbosch, 7600, South Africa

This document is for informational purposes only. Specifications subject to change without notice.

