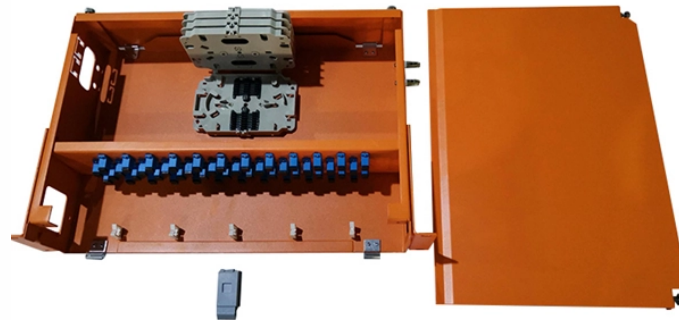


How to configure a fixed IP broadband access switch



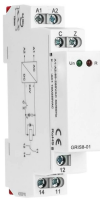
Overview

In this tutorial, you'll learn how to configure a switch with a fixed IP address step-by-step so you can optimize your network and keep it running smoothly. This configuration allows for easier and more efficient network management, as IP addresses can be assigned to specific devices and network traffic can be monitored. The IP address of the switch can be manually configured or automatically received from a Dynamic Host Configuration Protocol (DHCP) server. If there are no DHCP servers. To configure an IP Address on a switch interface, first, we must change the interface from a layer 2 interface to a layer 3 interface. Learn more In this video, I walk through the process of assigning a static IP address to a device in your home. This Static IP Set Up Guide will instruct you how to set up your new Static IP Connection and Multiple Static IP addresses (if applicable). Click the Start Searching button. For each switch, the tool displays the IP address.

How to configure a fixed IP broadband access switch



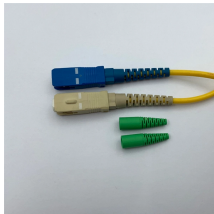
This article provides a comprehensive guide on how to configure a static IP address across different operating systems and devices, including Windows, macOS, Linux, and network routers.



By default, when you setup a switch, it will try to attain connectivity via DHCP. You can also configure a static IP address through Dashboard or through the local configuration page. If a ...



Here's how to set a Static IP address (or DHCP reservation) for any device on your network. An IP address is a unique identifier for a specific device on your network. Your router assigns...



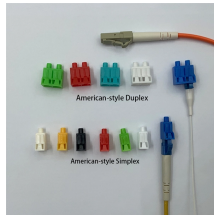
You can also set up a fixed (static) IP address for the switch (see Set up a fixed IP address for the switch on page 15) to make sure that the new bookmark always links to the login page for the ...



This Static IP Set Up Guide will instruct you how to set up your new Static IP Connection and Multiple Static IP addresses (if applicable). Static IP addresses have a dedicated IP address on the Internet ...



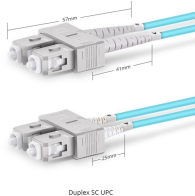
To configure an IP Address on a switch interface, first, we must change the interface from a layer 2 interface to a layer 3 interface. A point to note is that to provide an IP Address to a switch ...



In this video, I walk through the process of assigning a static IP address to a device in your home network. ...more



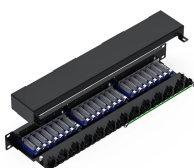
A static IP configuration issue can prevent devices from properly connecting to a network, causing internet disruptions, device conflicts, and poor performance.



In this tutorial, you'll learn how to configure a switch with a fixed IP address step-by-step so you can optimize your network and keep it running smoothly. If you're looking for an effective way ...



To configure an IP Address on a switch interface, first, we must change the interface from a layer 2 interface to a layer 3 interface. A point to note ...



This article provides instructions on how to configure the IP address settings of your switch through the Command Line Interface (CLI). If you are unfamiliar with terms in this document, ...

Contact Us

For more information, pricing, or custom solutions, please contact us:

Website: <https://samastersbaseball.co.za>

Email: sales@samastersbaseball.co.za

Phone: +27 63 874 2095

Address: 15 Innovation Drive, Technopark, Stellenbosch, 7600, South Africa

This document is for informational purposes only. Specifications subject to change without notice.

