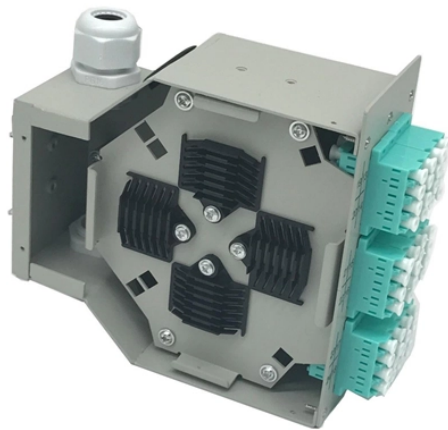


How to branch the power lines in the distribution box



Overview

Welcome to our channel @Electricalgenius In this video, we'll take you through a detailed step-by-step guide on wiring a home distribution DB (Distribution Board) box. It is usually equipped with circuit breakers, fuses, terminal connectors, and other components. Proper setups ensure balanced electrical loads, ground fault protection, and easy maintenance. Common configurations include single-phase for homes and three-phase for. Connection method: Each switch takes a wire from the incoming point and connects it to the incoming end of the switch, or uses parallel connection to reduce the difficulty of wiring. Wiring Direction: Wiring between the main circuit breaker and each branch circuit breaker in the box generally. How to Estimate the Size of the Box that I Want?

Can I Customize a Distribution Box?

How to Choose a Suitable Electrical Distribution Box?

How does a Distribution Box Work?

What's the Difference Between Distribution Boxes and Junction Boxes?

What is the recommended inspection schedule for. A distribution box is the heart of any electrical system. It takes the incoming power and safely distributes it to different circuits throughout your building.

How to branch the power lines in the distribution box



The wiring diagram for a single phase breaker box illustrates the connections and distribution of electrical power within the panel. It shows how the main breaker, branch circuits, and individual ...



First of all, you need to have a simple understanding of the definition of a distribution box, and make it clear which kind of distribution box you want to install. This is important to properly install it.



Reliable cable distribution boxes ensure safe, efficient power management for residential, commercial, and industrial systems. Learn installation and safety tips.



Wiring Direction: Wiring between the main circuit breaker and each branch circuit breaker in the box generally goes on the left, and the wiring out of the distribution box generally goes on the ...



Find out how to properly wire an electrical panel box with a comprehensive diagram and step-by-step instructions.



Whether you're an electrician or a DIY enthusiast, this tutorial will help you understand the fundamentals of wiring a distribution box for a residential setup.



A distribution box is the heart of any electrical system. It takes the incoming power and safely distributes it to different circuits throughout your building. Whether in a home or an industrial ...



As you strip sheathing, the panel quickly fills up with the "spaghetti" of individual wires; many electricians drive a nail to one side of the box and loosely drape wires over the nail as they strip them, to get ...



In this video, we'll walk you through the process of wiring a home distribution box with a detailed connection diagram. Whether you're an electrician or a DIY enthusiast, this guide will help ...



Circuit breaker wiring configurations involve organizing main switches, busbars, and branch breakers within a distribution box. Proper setups ensure balanced ...



Circuit breaker wiring configurations involve organizing main switches, busbars, and branch breakers within a distribution box. Proper setups ensure balanced electrical loads, ground fault protection, and ...

Contact Us

For more information, pricing, or custom solutions, please contact us:

Website: <https://samastersbaseball.co.za>

Email: sales@samastersbaseball.co.za

Phone: +27 63 874 2095

Address: 15 Innovation Drive, Technopark, Stellenbosch, 7600, South Africa

This document is for informational purposes only. Specifications subject to change without notice.

