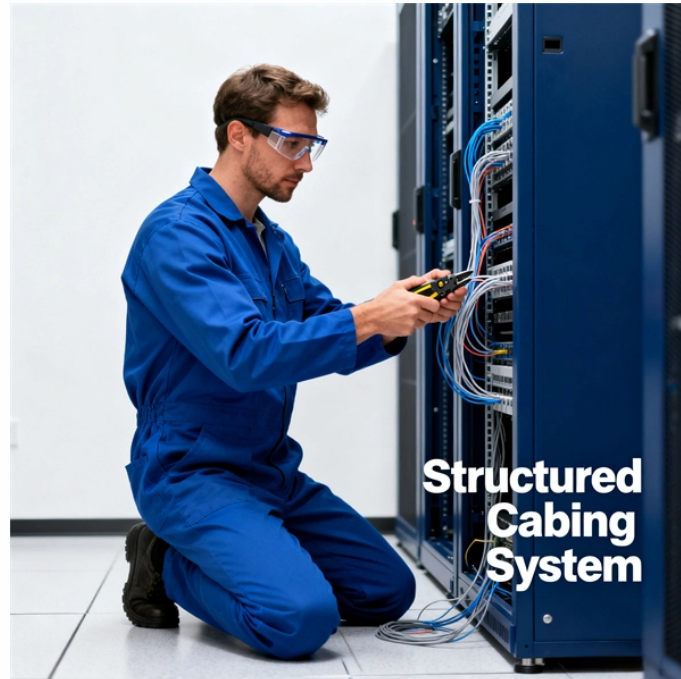


How to achieve a fixed height in the optical flow module



Overview

To implement this mode, an optical flow sensor and a Time of Flight (TOF) sensor are needed. Height-hold mode: keep flight height. It can be used to determine speed when navigating without GNSS — in buildings, underground, or in any other GNSS-denied environment. The video below shows PX4 holding position using the Ark. The HereFlow optical flow sensor is a lightweight optical flow sensor including a short range lidar which uses the CAN protocol to communicate with the autopilot. These sensors help maintain a stable hover by providing precise data about the drone's position and altitude. This drone comes with simple-structured hardware, clear codes, and supports functional extension. Optical Flow based navigation is supported by all three estimators: EKF2, LPE and INAV (see below).

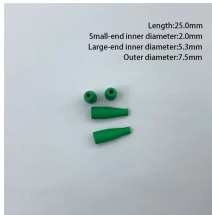
How to achieve a fixed height in the optical flow module



The `test_optical_flow_sensor.py` script demonstrates how to stream optical flow data from the LiteWing, convert pixel deltas to velocities, and integrate them into a 2D trajectory.



ACHIEVE definition: 1. to succeed in finishing something or reaching an aim, especially after a lot of work or effort.... [Learn more.](#)



Learn how to set up a rangefinder optical flow sensor in iNav for enhanced FPV drone stability in Position and Altitude Hold modes.



In order to ensure good optical flow quality, it is important to focus the camera on the PX4Flow to the desired height of flight. To focus the camera, put an object with text on (e. g. a book) and plug in the ...



After connecting the sensor to the controller, connect the controller to Mission Planner and open the Status tab of the Flight Data screen. If the sensor is operational, you should see non-zero `opt_m_x`, ...



Achieve's Test Prep Portal for online courses



Surface mode flies the orange line, distance to the nearest obstacle seen by the rangefinder. Regular altitude mode flies the purple line, using the GPS and baro. Note you can't fly the purple line and the ...



Boost literacy skills with Achieve3000 Literacy, a comprehensive, personalized learning solution from McGraw Hill. Explore our platform for improved student outcomes.



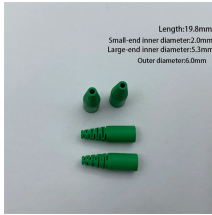
We do more so you can Achieve More.



Take our free trial to discover why students and teachers have made ACHIEVE their learning, teaching and study tool of choice. Access interactive digital text books for each course, with key concepts fully ...



Sign in to manage your account, make a payment, and view details on your loan.



The meaning of ACHIEVE is to succeed at reaching or accomplishing (a goal, result, etc.) especially through effort. How to use achieve in a sentence. Common Misspellings Synonym Discussion of ...



To get accurate velocity data, the flight controller must know the exact height (using a barometer or rangefinder) to scale the optical flow data. Most drone optical flow sensor units have an ...



Thank God for people like you who have such big hearts in making individuals...achieve more skills. They live fuller lives, integrate more fully with society and within their constraints actively participate ...



The PMW3901 is an optical flow sensor often used in drones and robotics to detect motion relative to the ground. It helps maintain a steady position, especially when GPS signals are ...



Support various sensor combinations for advanced flight modes, such as Height-hold mode and Position-hold mode. Based on FreeRTOS, which allows users to break down complex drone ...



Welcome to Achieve! You can use your Achieve account to sign in to your dashboard. Not a member? Take control of your financial future today. Explore my options. Achieve is the leader in digital ...



The flow sensor should be mounted on the underside of the copter with the camera lens pointing downwards. The side of the sensor with the lens should be towards the front of the vehicle.



Let an Achieve certified personal trainer take you by the hand and lead you firmly and patiently toward a future you just about gave up on. You really can do it and we really know how!



An Optical Flow setup requires a downward facing camera and a downward facing distance sensor (preferably a LiDAR). These can be combined in a single product, such as the ARK Flow, ARK Flow ...

Contact Us

For more information, pricing, or custom solutions, please contact us:

Website: <https://samastersbaseball.co.za>

Email: sales@samastersbaseball.co.za

Phone: +27 63 874 2095

Address: 15 Innovation Drive, Technopark, Stellenbosch, 7600, South Africa

This document is for informational purposes only. Specifications subject to change without notice.

