

How many ground wires should be connected to the three-level distribution box



Overview

A 3-wire feeder consists of three conductors: two hot conductors (L1 and L2), and one grounded conductor that functions as both the neutral and the equipment grounding conductor (EGC). These setups typically provide 240V for most applications, but it's crucial to follow the proper configuration to prevent hazards. The grounded service conductor is required to be connected to a grounding electrode conductor at each. If a box contains three ground wires, how many conductors do you count them as for the fill allotment?

The National Electrical Code (NEC) considers multiple ground wires connected together, terminating on the same ground terminal, or connecting to the same grounding electrode conductor as one. Sometimes if I have a 3 or 4-gang plastic nail-on switch box that has a bunch of NM cables, when I'm making up the box rather than using a big blue wire-nut for my grounds I'll separate the grounds into 2 groups and use red/tan wirenuts instead, especially if there's 2 circuits in the box. I can. Most North American distribution systems have a

neutral that acts as a return conductor and as an equipment safety ground. It is recommended to ground the neutral at various strategic locations in distribution substations, overhead lines and underground cables, distribution transformers, and all.

How many ground wires should be connected to the three-level dist



Common grounding electrodes include rods, plates, pipes, ground rings, metal in-ground support structures and concrete-encased electrodes. All grounding electrodes at each building or ...



A 3-wire feeder consists of three conductors: two hot conductors (L1 and L2), and one grounded conductor that functions as both the neutral and the equipment grounding conductor (EGC).



Learn how to install a distribution box safely and correctly. Covers wiring, placement, standards, and expert tips for a compliant setup.



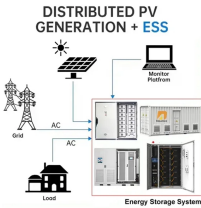
The NEC requires the grounded conductor (s) to be routed with the ungrounded conductors to the service entrance equipment and it shall connect to the grounded conductor (s) ...



Four-wire systems are superior to three-wire systems for serving single-phase loads and are predominant in North America. In addition to safety, it is cheaper to build the system because a ...



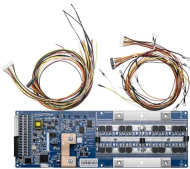
The National Electrical Code (NEC) considers multiple ground wires connected together, terminating on the same ground terminal, or connecting to the same grounding electrode conductor as one conductor.



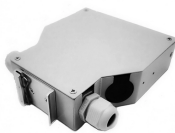
Use three conductors for this setup: a hot wire (usually black), a neutral (white), and a ground (bare or green). Ensure the conductors are long enough to reach both the source and destination, with some ...



The ground wire can be attached to the metal box by means of a grounding screw or clip. If several grounding wires are used, these must be bonded together, typically in a wire nut or other ...



If you have more than one circuit in the box, tying all the grounds together is not necessary as long as you separate the EGC's of each individual circuit and make sure they are all ...



Bond all metal enclosures, raceways, boxes, and equipment grounding conductors into one electrically continuous system. Consider the installation of an equipment grounding conductor of ...

Contact Us

For more information, pricing, or custom solutions, please contact us:

Website: <https://samastersbaseball.co.za>

Email: sales@samastersbaseball.co.za

Phone: +27 63 874 2095

Address: 15 Innovation Drive, Technopark, Stellenbosch, 7600, South Africa

This document is for informational purposes only. Specifications subject to change without notice.

