

How high should a household electrical distribution box typically be installed



How high should a household electrical distribution box typically be



The height of the panel should be easy to reach, typically between 4 to 6 feet off the ground. If the panel is located in a basement or outside, it's ...



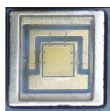
Electrical panels need to be installed 4' off the ground with the center grip handle of the highest circuit breaker is no more than 6'7" high to be NEC compliant.



For the vertical clearance, often called headroom, the space must be clear from the floor up to a minimum height of 6 feet 7 inches (2.0 meters) or the height of the equipment, whichever is ...



According to NEC 110.26, sufficient working clearance is mandatory around electrical equipment, including breaker boxes. A minimum of 3 feet clearance in front of the panel and a height ...



Clearance: Electrical panels must be installed in a readily accessible area with a minimum clearance of 30 inches (762 mm) wide, 3 ft (36 inches or 914 mm) deep, and 6.5 feet (\approx 2 meter) high in front of ...



The proper installation of a distribution box involves placing it at the right height to ensure safety and convenience. Mounting it 4.5 to 5.5 feet (1.4 to 1.7 meters) high makes it easily accessible without ...



Choose the right box based on environment (indoor/outdoor), load capacity, and durability. Check for proper IP/NEMA ratings and material quality. Ensure safe placement: install in ...



Particularly, the electrical rule book states that a panel must be installed no less than four feet off the floor. In the same vein, the height of the electrical panel must not be more than six feet ...



According to NEC 110.26, sufficient working clearance is mandatory around electrical equipment, including breaker boxes. A ...



The minimum height for a circuit breaker box is 4 feet, though the ideal height is between 5 feet and 6 feet. The maximum height allowed for the circuit breaker box is 6 feet.



The National Electrical Code (NEC) does not specify a minimum height for an electrical panel, although practical access for service should always be considered.



For these reasons, while not an official NEC rule, a common best practice is to install the panel so the bottom of the enclosure is at least 48 inches from the floor. This keeps it at a ...



The actual depth of the electrical equipment and the associated equipment can have a difference of more than 6 inches, as long as the depth difference after installation is not more than 6 inches. For ...

Contact Us

For more information, pricing, or custom solutions, please contact us:

Website: <https://samastersbaseball.co.za>

Email: sales@samastersbaseball.co.za

Phone: +27 63 874 2095

Address: 15 Innovation Drive, Technopark, Stellenbosch, 7600, South Africa

This document is for informational purposes only. Specifications subject to change without notice.

