

## How are cables distributed in the vertical shaft electrical box

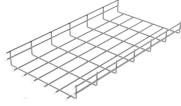


### Overview

An electrical riser is a vertical electrical system that allows electricity to be distributed within a building. It is typically housed within a conduit, cable tray, or designated riser shaft. These risers serve as vertical pathways for electrical distribution, ensuring power is safely delivered from a main service connection to multiple floors or sections within a building. Proper installation and maintenance are crucial for safety, efficiency, and compliance with electrical codes. This. Vertical cable supports make the difference between being connected or disconnected in longer vertical raceways. Frank Cunningham, Product Launch Manager | Electrical Apparatus & Lighting, Emerson Automation Solutions When constructing the Empire State Building in 1930, engineers found that the. A power riser diagram depicts the vertical distribution of electrical power within a building. This guide draws from industry best practices, relevant standards like the NEC, and hands-on experience to provide you. The utility model relates to an electrical vertical shaft structure of a high-rise residential building, which comprises a vertical derrick, wherein support plates are welded at the top end and the bottom end of the vertical derrick, first fixing plates are respectively arranged at four sides

of. The installation of HV cables in vertical shafts is very dangerous. You must be fully aware of the risks involved and the installation must be handled by professionals.

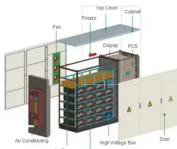
## How are cables distributed in the vertical shaft electrical box



This document discusses electrical distribution systems for large buildings. It explains that the distribution system has both vertical (rising mains) and horizontal components.



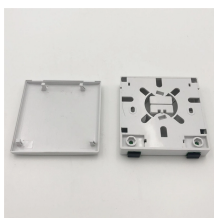
Cables, Adapters, Fiber, Network Add-ons & Tools  
This 20m Multimode Duplex OM4 Fiber Optic Patch Cable (50/125) - LC to LC has ceramic ferrules and a 50/125 micron core, this cable is suitable for ...



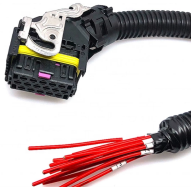
Check each product page for other buying options. This product has sustainability features recognized by trusted certifications.



Large cross-section wires and numerous cables are laid in the vertical direction, making the pipe-threading and laying method insufficient. Therefore, in a high-rise building, a shaft with a...



Think of it as the “spinal cord” or the “ elevator shaft ” for your cabling infrastructure, providing a protected and structured pathway for cables to travel between different floors, within ...



Generally, it is easier to pull the cable up instead of down, but depending on the installation that is not always an option. Once you have the cable in place, you need to have a proper ...



Ensure uninterrupted operations with our robust cabling, power, and network solutions, including high-speed fiber optic cables. Our extensive product range ensures efficiency, reliability, and scalability, ...



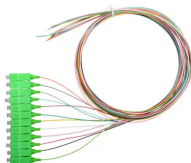
Since 1995, distributor of cables such as Cat5e, Cat6, Cat7 Ethernet, HDMI, computer cables, audio cables, connectors and adapters. Same day shipping!



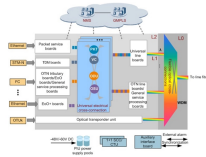
You need cable supports every X feet based on the size and type of conductor. The boxes only need to be accessible.



Both output distribution boards are fed by a 600-A battery rack system. The electricians nicely incorporate cable trays for the dc conductors between the three compartments of the system. ...



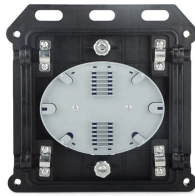
These diagrams visually represent how electrical wiring and power are distributed vertically within a building, offering key insights for electrical professionals.



A power riser diagram depicts the vertical distribution of electrical power within a building. It shows how electricity enters the facility and is stepped down and distributed to various floors and loads.



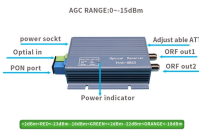
With designations such as NM and UF, building cable brings power to wall outlets and outlet boxes. Send high-definition signals to monitors, TVs, and projectors. Send data between computers, ...



An in-building riser is a vertical pathway, typically a shaft or a set of ducts, that allows essential services and utilities to be distributed throughout the building.



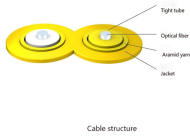
This guide will teach you the difference between types of electrical wires and types of electrical cables. You'll also learn how to choose between electrical cables and wires for your projects.



Find cell phone and other computer hardware cables. Enjoy freedom while charging and ensure reliable connections between hardware and other devices.



Buy Networking Cables, Fiber Optic Cables, Outdoor Cables, Cat6 Ethernet cables and more at wholesale prices (once approved and qualified) or simply refer users to our website for a commission.



As a premier online bulk cable company, CableWholesale carries a large inventory of computer cables, USB, HDMI, fiber optic, VGA cables, and more. Shop now!



Trust your Data Center to CablesAndKits, the industry leader in Cisco Hardware, Ethernet cables, Fiber and more. Lifetime Warranty, Same-day Shipping & Expert Advice.



Emerson's O-Z Gedney Type S cable supports are used to support cables in vertical raceways or risers. They relieve the strain that would be placed on terminations, the interior of ...

## Contact Us

For more information, pricing, or custom solutions, please contact us:

Website: <https://samastersbaseball.co.za>

Email: [sales@samastersbaseball.co.za](mailto:sales@samastersbaseball.co.za)

Phone: +27 63 874 2095

Address: 15 Innovation Drive, Technopark, Stellenbosch, 7600, South Africa

This document is for informational purposes only. Specifications subject to change without notice.

