

Handling of Distribution Boxes and Low Voltage Boxes



Handling of Distribution Boxes and Low Voltage Boxes



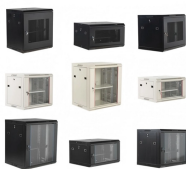
Outdoor low-voltage distribution boxes: essential equipment facing operational challenges like overheating & lightning damage. Learn practical solutions for improved reliability and safety.



BARTEC's Ex zone 1 Power Handling Systems are designed for extended maintenance and remote operated installations. They include fully modular low- and medium-voltage Ex-e, Ex-d, and Ex-p ...



At the heart of any low voltage switchgear design are five interacting elements: the frame and enclosure the switching devices the horizontal main busbar the vertical distribution busbar the ...



Low voltage distribution boxes are the silent guardians of modern infrastructure - hidden behind walls and in utility rooms, orchestrating power flow with Swiss-watch precision.



Box substations are primarily classified by their voltage ratings, which define their application scope and equipment requirements. Low-voltage box substations, handling up to 1 kV, ...



Substations Substations serve as critical nodes connecting generation, transmission, and distribution networks. While substations are used for several distinct system functions, most utilize electric power ...



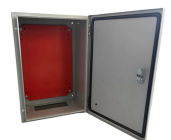
WHAT YOU NEED TO KNOW Even “low voltage” can be deadly. Always treat every circuit as if it is energized until proven otherwise. Use only tools and equipment that are properly ...



Inspect the panel for physical damage/loss of components. In any unlikely event of damage/loss, lodge insurance claim. Use crane / Forklift as applicable for shifting the transport sections. For this purpose ...



In designing the distribution board and power cabinet, ABB drew upon its wealth of experience with low-voltage switchgear and placed a strong emphasis on the product's ease of installation, operations, ...



Regularly inspect Low Voltage Distribution Boxes every three months to catch problems early and avoid costly repairs. Always clean the boxes using safe methods. Turn off power, use dry ...

Contact Us

For more information, pricing, or custom solutions, please contact us:

Website: <https://samastersbaseball.co.za>

Email: sales@samastersbaseball.co.za

Phone: +27 63 874 2095

Address: 15 Innovation Drive, Technopark, Stellenbosch, 7600, South Africa

This document is for informational purposes only. Specifications subject to change without notice.

