

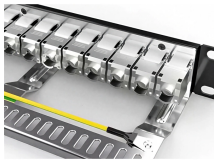
Grounding wire for low-voltage conduits and cable trays



Grounding wire for low-voltage conduits and cable trays



Cables must be secured to the cable tray prior to and after the transition, and protected by guarding or location. The electrical connection between sections can be maintained with bonding jumpers or a ...



“Metallic cable trays that support electrical conductors shall be grounded as required for conductor enclosures in accordance with 250.96 and part IV of Article 250.”



Genesis® Insulated Ground Wire is suitable for installation as follows: Installed in a metal raceway that complies with 300.22 (B). Supported by solid bottom metal cable trays with solid metal covers. Within ...



Listed offset nipples and metal fittings for metal cable, conduit, and tubing are considered suitable for grounding circuits where installed per the NEC, except as noted for flexible metal conduit fittings and ...



Learn the essential role of Equipment Grounding Conductors (EGC) in cable tray systems, including sizing requirements, installation standards, and ...



This article provides a comprehensive framework that governs various aspects of cable tray installations, including the types of cables that are deemed acceptable for use, requirements for ...



All metallic cable trays shall be grounded as required in Article 250.96 regardless of whether or not the cable tray is being used as an equipment grounding conductor (EGC). The EGC ...



The use of solid-copper allows for very low voltage drop along the center conductor over long runs, and offer strong grounding properties. Multi-Purpose building wire has many uses - including cable trays, ...



The intent of this article is to review grounding practices for cable tray wiring systems. The Equipment Grounding Conductors are the most important conductors in the electrical systems. The Equipment ...



Discover the best practices for Cable Tray Grounding Wire installation. Learn key requirements, safety tips, and material choices to ensure a grounding system.



Choosing the correct grounding wire size is a crucial factor in low voltage cable tray grounding. Proper wire sizing ensures efficient grounding and reduces resistance, which can ...

Contact Us

For more information, pricing, or custom solutions, please contact us:

Website: <https://samastersbaseball.co.za>

Email: sales@samastersbaseball.co.za

Phone: +27 63 874 2095

Address: 15 Innovation Drive, Technopark, Stellenbosch, 7600, South Africa

This document is for informational purposes only. Specifications subject to change without notice.

