

## Free quote for 800G core switch



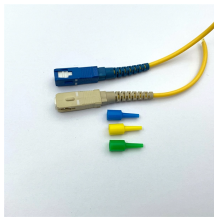
### Overview

This product is already in your quote request list. Edgecore AIS800 is an ultra-high-density 800G QSFP-DD switch designed for advanced data center and AI network environments that require maximum bandwidth, scalable fabric performance, and precise timing capabilities. The Edgecore AIS800-64D / DCS560 is a high-performance, low-latency switch ideal for data centers, AI/ML clusters, and high-performance computing. Breakout options include 2 x 400G, 4 x 200G, and 8 x 100G per port, with a maximum of 320 logical ports. Artificial-Intelligence and Machine-Learning (AI/ML) applications are being used increasingly in today's data centers, and Cisco N9000 Series Switches have the hardware and software capabilities to provide the right latency. Celestica's 800G Family of Network Switches are purpose-built to support cutting-edge AI/ML and HPC requirements.

## Free quote for 800G core switch



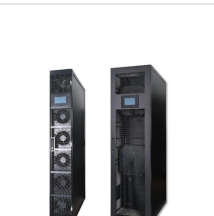
800G Data Center Switch SNK-60x0-320F Key Features • AI Data Center Switch • 32 x 800G OSFP • 1 x 25G SFP28 inband management port • 1 x RJ-45 Out-of-Band (OOB) management port • 1 x USB ...



A next-generation, highest-capacity switch for data center spine use case. Breakout options include 2 x 400G, 4 x 200G, and 8 x 100G per port, with a maximum of 320 logical ports.



Cisco N9364E-SG2 switches introduce high-density 800G aggregation for the data center fabric. They also offer various lower port speeds and densities, including 400, 200, and 100 Gbps.



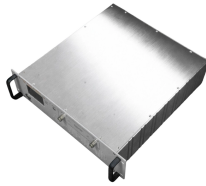
FS 400/800G PicOS® data center switches offer high speeds and port densities to meet the network deployment requirements of various scenarios and the evolving requirements of next-generation data ...



Description Edgecore AIS800 is an ultra-high-density 800G QSFP ...



Choose from new price-performance options on merchant silicon in our 400G and 800G switches and routers to reach new benchmarks of performance and functionality.



Celestica's 800G Family of Network Switches are purpose-built to support cutting-edge AI/ML and HPC requirements. The DS5000 delivers unparalleled high-density and high-performance solutions ...



Our expertise encompasses enterprise, cloud, data center, 5G/service provider infrastructure, and edge IT. Contact us for a free assessment, product quotes, infrastructure architecture expertise, or pre ...



Discover the power of Open Networking with 1-1.6T Open switches. Ideal for public and private cloud data centers of all sizes.



For the sample orders, if it met with the Free Shipping policy, then shipping and delivery cost would be covered by NADDOD. But if it is not, then the shipping and delivery cost and additional charges in ...



Description Edgecore AIS800 is an ultra-high-density 800G QSFP-DD switch designed for advanced data center and AI network environments that require maximum bandwidth, scalable fabric ...

## Contact Us

For more information, pricing, or custom solutions, please contact us:

Website: <https://samastersbaseball.co.za>

Email: [sales@samastersbaseball.co.za](mailto:sales@samastersbaseball.co.za)

Phone: +27 63 874 2095

Address: 15 Innovation Drive, Technopark, Stellenbosch, 7600, South Africa

This document is for informational purposes only. Specifications subject to change without notice.

