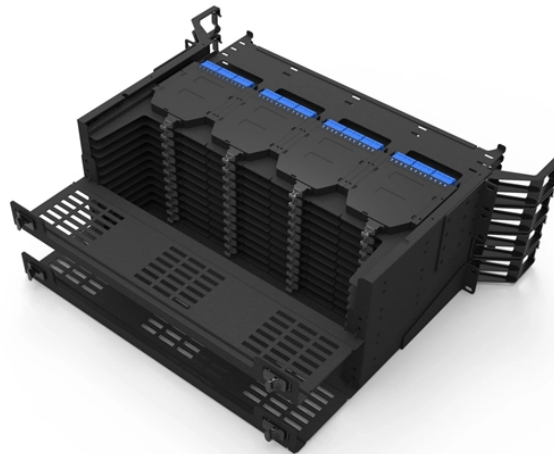


# Folding of distribution box bracket



## Overview

This video shows our power cabinet assembly process on the factory floor. Watch technicians use an electric drill to fasten distribution-box components, install brackets, route wiring channels, and prepare units for final inspection and packing. more. Mounting bracket is a flexible structure, which makes it easy to adjust or replace the electrical components. All the components, wires and connections are under the protective cover due to the same height. When it comes to rigid, easy to install electrical box supports, Eaton offers a wide variety of B-Lines series electrical boxes that help reduce installation complexity. A distribution box, also known as a. A Practical Guide to Streamlining Your Electrical Setup Hey there, fellow installers and DIY enthusiasts! If you're diving into the world of modular distribution boxes, you've made a smart choice.

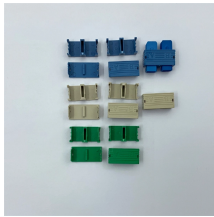
## Folding of distribution box bracket



From floor-mount to wall-mount box supports, we offer a variety of options to mount just one or up to 5 boxes. Find out how to save on installation time.



What's the difference between a distribution box and a sub-panel? A distribution box typically refers to the main electrical panel that receives power from the utility service. A sub-panel is ...



Snap to Stud Electrical Box Bracket, Box Size: 4" and 4-11/16", Steel, 25 Pack. Category: Enclosure Mounting Bracket Kits.



The trickiest part of installing inner components of a distribution box is that the components' heights are irregular. E-Abel's flexible mounting bracket can solve this problem easily.



To install distribution box systems, you'll use hand tools such as screwdrivers and pliers. Wire strippers are essential when you install distribution box wiring. A ...



Using a flathead screwdriver, carefully pry upward between the hinge of the splice tray to remove it from the distribution box. Remove the clear cover of the splice tray. 3. Remove the cable grommet with ...



Distribution Box Installation: Put the distribution box on the installation surface, and align the position of the expansion bolts and tighten the screws. This step needs to be checked carefully, ...



Installing modular distribution boxes feels intimidating because you're essentially building a miniature power plant. But that complexity is also its beauty - each component's purpose is clear, ...



Fixing to a bracket or frame: In some special applications, it may be necessary to fix the distribution box to a bracket or frame to facilitate installation and maintenance.



Watch technicians use an electric drill to fasten distribution-box components, install brackets, route wiring channels, and prepare units for final inspection and packing. We focus on...



To install distribution box systems, you'll use hand tools such as screwdrivers and pliers. Wire strippers are essential when you install distribution box wiring. A measuring tape and utility knife are also ...

## Contact Us

For more information, pricing, or custom solutions, please contact us:

Website: <https://samastersbaseball.co.za>

Email: [sales@samastersbaseball.co.za](mailto:sales@samastersbaseball.co.za)

Phone: +27 63 874 2095

Address: 15 Innovation Drive, Technopark, Stellenbosch, 7600, South Africa

This document is for informational purposes only. Specifications subject to change without notice.

