

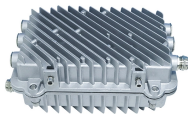
## Five busbars in the distribution cabinet



## Five busbars in the distribution cabinet



One bay unit includes circuit breaker, disconnector(s), measuring transformers and the local control and interface cabinet in one transportation unit. The unit has been factory-assembled and tested, offering ...



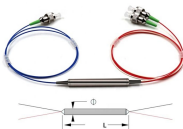
Complementing Eaton's range of low voltage distribution equipment from packaged substations and MV and LV distribution switchboards to a complete selection of fused switchgear, circuit breaker ...



the circulation of high currents in busbars leads to the induction of magnetic fields in the surrounding exposed metal conductive parts (enclosure panels, frames and chassis, etc.).



The arrangement and connection of incoming and outgoing feeders in grid stations and substations and the number of busbars have a significant influence on the supply reliability of the ...



Inside every professionally built distribution cabinet, the neatly aligned busbars form the structural backbone of electrical energy transmission. These busbar conductors carry large...



The main switchgear distribution bus has three busbar sets (one set per phase) which run horizontally through all the cubicles in a line-up. These distribution busbars run through a dedicated ...



In electric power distribution, a busbar (also bus bar) is a metallic strip or bar, typically housed inside switchgear, panel boards, and busway enclosures for ...



Simply put, a distribution cabinet is an enclosure that contains circuit breakers, relays, busbars, and monitoring devices. It ensures that electricity is delivered safely and efficiently to ...



For electrical engineers, the arrangement of busbars is never arbitrary. It follows a strict and internationally recognized logic—the ABCN phase sequence rule, a key principle that ensures ...



For electrical engineers, the arrangement of busbars is never arbitrary. It follows a strict and internationally recognized logic—the ABCN phase ...



Busbar connections best practices guide for reliable electrical enclosure busbar joint design and power distribution cabinet safety Introduction In ...



Designing a substation involves not only the visible equipment and ratings but also the less apparent factors—operational flexibility, fault tolerance, and maintainability. The busbar ...



If you need a modular switchboard solution for your electrical distribution needs, then we can offer you a custom solution including busbars at competitive prices that is tailored to your needs.

## Contact Us

For more information, pricing, or custom solutions, please contact us:

Website: <https://samastersbaseball.co.za>

Email: [sales@samastersbaseball.co.za](mailto:sales@samastersbaseball.co.za)

Phone: +27 63 874 2095

Address: 15 Innovation Drive, Technopark, Stellenbosch, 7600, South Africa

This document is for informational purposes only. Specifications subject to change without notice.

