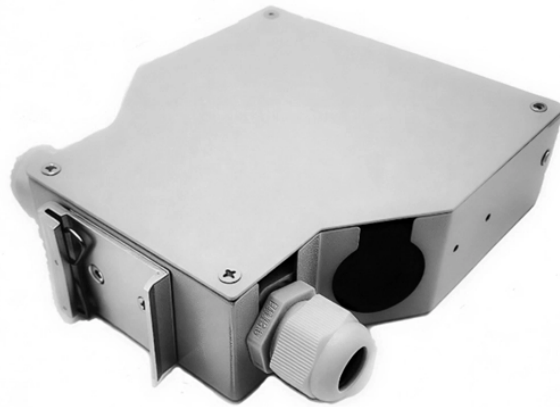


Fire equipment distribution box gb



Fire equipment distribution box gb



Seco storage boxes manufactured in GRP and high-impact rotationally moulded resistant plastic. Our range of cabinets are designed and built to provide long lasting protection.



This generously sized fire equipment box can easily house a large stash of fire safety items. Keep your equipment safe. Shop online now for next working day delivery.



Safely conduct, connect and distribute energy in hazardous areas with R. STAHL's terminal boxes. We offer bespoke, custom-made terminal boxes and terminal box combinations, as well as standard ...



The GB-terminal box, both distribution box and empty enclosure, is manufactured of high impact resistance, glass-fibre reinforced polyester SMC & DMC providing extraordinary stability and ...



Fire equipment boxes provide secure storage for essential fire safety tools. Made from durable, weather-resistant materials, these boxes ensure equipment is easily accessible during ...



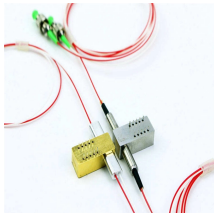
Our FireChief Fire Equipment Box has been designed and built to provide long-lasting protection for all types of fire equipment. This box is suited to housing a variety of fire equipment as well as housing ...



Our large fire equipment box will fit 4 extinguishers, has twin locks and key box, is ultra-durable and very long lasting. In stock and delivered next day.



Keep your fire fighting equipment safe with our lockable large fire equipment box. Ultra-durable and long-lasting. Available now for next working day delivery.



To ensure fire resistance is maintained, enclosures should always be installed using appropriately rated cable and glands. In addition to pre-assembled enclosures, Abtech can provide fire-rated stainless ...

Installation instructions GB-110 Entry positions Entry positions Entry positions Entry positions GB-255 Entry positions A maximum of 2 earth connection bars type QS9 may be supplied. Alternative terminal types are available. The maximum number of terminals listed above depends on the maximum conductor size and maximum current. At least one earth terminal must be supplied. The enclosure can be mounted with the terminal strip horizontally or vertically aligned or fitted... See more on docs.rs-online.

```

.b_imgcap_alttitle p strong,.b_imgcap_alttitle .b_factrow
strong{color:#767676}#b_results .b_imgcap_alttitle{line-height:22px}.b_imgcap_altit
le{display:flex;flex-direction:row-reverse;gap:var(--mai-smtc-padding-card-nested-
default)}.b_imgcap_alttitle .b_imgcap_img{flex-shrink:0;display:flex;flex-
direction:column}.b_imgcap_alttitle .b_imgcap_main{min-
width:0;flex:1}.b_imgcap_alttitle .b_imgcap_img>div,.b_imgcap_alttitle .b_imgcap_img
a{display:flex}.b_imgcap_alttitle .b_imgcap_img img{border-radius:var(--mai-smtc-
corner-card-default)}.b_hList img{display:block}.b_imagePair ner
img{display:block;border-radius:6px}.b_algo .v2v2 img{border-radius:0}.b_hList
.cico{margin-bottom:10px}.b_title .b_imagePair> ner,.b_vList>li>.b_imagePair>
ner,.b_hList .b_imagePair> ner,.b_vPanel>div>.b_imagePair> ner,.b_gridList
.b_imagePair> ner,.b_caption .b_imagePair> ner,.b_imagePair>
ner>.b_footnote,.b_poleContent .b_imagePair> ner{padding-bottom:0}.b_imagePair>
ner{padding-bottom:10px;float:left}.b_imagePair.reverse>
ner{float:right}.b_imagePair .b_imagePair:last-child:after{clear:none}.b_algo .b_title .
b_imagePair{display:block}.b_imagePair.b_cTxtWithImg>*{vertical-
align:middle;display:inline-block}.b_imagePair.b_cTxtWithImg>
ner{float:none;padding-right:10px}.b_imagePair.square_s>
ner{width:50px}.b_imagePair.square_s{padding-left:60px}.b_imagePair.square_s>
ner{margin:2px 0 0 -60px}.b_imagePair.square_s.reverse{padding-left:0;padding-
right:60px}.b_imagePair.square_s.reverse> ner{margin:2px -60px 0
0}.b_ci_image_overlay:hover{cursor:pointer}.b_factrow>li.b_sritem,.b_factrow
.ssp_expert{font-weight:bold}.b_factrow.b_twofr
.b_sritem>.b_sritemp{display:inline;font-weight:normal}.b_factrow.b_twofr
.b_sritem{font-weight:bold}.b_factrow.b_twofr .csrc{margin-
left:5px}.b_factrow.b_twofr{padding-top:4px}.b_factrow.b_twofr ul:first-child{max-
width:calc(50% - 20px)}.b_factrow.b_twofr ul:first-child+ul{max-
width:50%}.b_factrow.b_twofr ul li div{white-space:nowrap;text-
overflow:ellipsis;overflow:hidden}.b_imagePair.wide_wideAlgo .b_factrow.b_twofr
.b_vlist2col{display:flow-root}Fire Protection Shop

```

Contact Us

For more information, pricing, or custom solutions, please contact us:

Website: <https://samastersbaseball.co.za>

Email: sales@samastersbaseball.co.za

Phone: +27 63 874 2095

Address: 15 Innovation Drive, Technopark, Stellenbosch, 7600, South Africa

This document is for informational purposes only. Specifications subject to change without notice.

