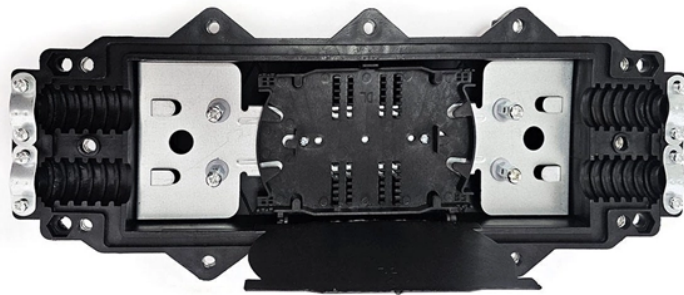


Fiber optic patch panel Ic



Fiber optic patch panel lc



L-com's fiber patch panels are constructed from the highest quality cold rolled steel and have a tough black powder coat finish. The number of LC fiber optic connection couplers on each patch panel are ...



Features rugged heavy steel construction with multiple rear entry points for trunk ...



Shop fiber optic patch panels in 12 port and 24 port options. LC, SC rack mount panels with adapters and pigtailed for data center and network installations.



FS offers FHD® FAPs and FHU™ 1U fiber patch panel with LC, SC, MTP®/MPO connectors in singlemode/multimode fiber to deploy medium for high-density fiber optic network applications.



An authoritative architectural guide to MPO to LC patch panels, evaluating insertion loss, polarity compliance, and high-density fiber routing for 2026 networks.



These high-density fiber patch panels allow a mix-and-match of e2XHD fiber and copper snap-in cassettes - up to 96 LC fibers or 48 copper ports per RU. Cassettes quickly snap in and pull out of ...



Optiwave™ 12 Fiber Adapter Plate with (x6) Duplex LC/UPC Adapters - LGX Compatible 19" 1U F-Type Patch Panel for (x3) F-Type Adapter Plates LC/UPC to LC/UPC Duplex Fiber Optic Patch Cable - ...



Explore CommScope's efficient and scalable fiber splice panels designed for seamless connectivity. Accommodating LC, SC, and MTP/MPO connectors, these panels are ideal for data centers, ...



1 Pack 24-Strand LC OM3 Multimode Fiber Optic Patch Panel | Rack Mount Enclosure with Splice Trays, LC UPC Couplers & Pigtails | Compatible with 19-Inch Network Rack Cabinets (12 Duplex Ports)



It helps organize fiber distribution inside a 19-inch rack, making it suitable for data centers, enterprise network rooms, telecom equipment rooms, and structured cabling systems. Rayoptic ...



Features rugged heavy steel construction with multiple rear entry points for trunk cable feeding into the panel, providing protection as well as internal management. 1U design takes up minimal space while ...

Contact Us

For more information, pricing, or custom solutions, please contact us:

Website: <https://samastersbaseball.co.za>

Email: sales@samastersbaseball.co.za

Phone: +27 63 874 2095

Address: 15 Innovation Drive, Technopark, Stellenbosch, 7600, South Africa

This document is for informational purposes only. Specifications subject to change without notice.

