

Fiber optic cable laying at both ends



Overview

On really long runs, pull from the middle out to both ends. If possible, use an automated puller with tension control or at least a breakaway pulling eye. Know and observe the maximum recommended load rating of the cable. We terminate fiber optic cable two ways - with connectors that can mate two fibers to create a temporary joint and/or connect the fiber to a piece of network gear or with splices which create a permanent joint between the two fibers. These terminations must be of the right style, installed in a. The Fiber Optic Association, Inc. (FOA) was founded in 1995 to help develop the workforce to build the fiber optic networks to support a rapid expansion in communications and the Internet. FO-VC2 JOINT USE - VERTICAL MIDSPAN CLEARANCES 48. FO-RI JOINT USE RISER. Uses single mode to launch LX optics down old multimode fibre, usually trying to get better distance/range on old cable plant. This technology has revolutionized the field of telecommunications, offering significantly higher bandwidth and faster signal transmission compared to.

Fiber optic cable laying at both ends



We terminate fiber optic cable two ways - with connectors that can mate two fibers to create a temporary joint and/or connect the fiber to a piece of network gear or with splices which create a permanent ...



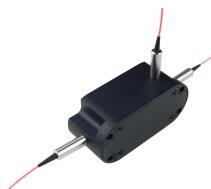
The following language is recommended for use in project documents: Fiber optic cables shall be installed in accordance with the FOA Standard for Installing Fiber Optic Cable Plants.



On really long runs, pull from the middle out to both ends. If possible, use an automated puller with tension control or at least a breakaway pulling eye. Know and observe the maximum recommended ...



Fiber optic cable sequential numbers are required at each pole location and vault wall. Sequential numbers will identify conduit length, and slack left in vaults and at poles.



Cable laying refers to deploying the optical fibre cable between the ends to be connected. There are several laying methods depending on the area where the cable laying needs to take place.



Learn how to install underground fiber optic cables safely and efficiently. Explore trenching, conduit selection, direct burial methods, splicing, termination, testing, and solutions for ...



This document provides procedures for fiber optic cable installation, termination, and testing for the SAOMPP project. It outlines responsibilities, required tools and equipment, general requirements, ...



Ends don't mean the end of the fiber optic cable, but a location where the cable is held firmly under tension. At a pole, two ends may be used to change directions of a cable, provide slack for ...



Post-installation testing includes continuity and attenuation testing using an OTDR to ensure the cable is usable and identify any damage before ...



Troubleshoot fiber optic issues like a pro with our expert guide. Resolve common problems and ensure seamless connectivity.



By rolling both ends, you'll be moving the single mode piece from the TX to the RX (or vice versa) which likely changes the characteristics of the link quite a bit.

Contact Us

For more information, pricing, or custom solutions, please contact us:

Website: <https://samastersbaseball.co.za>

Email: sales@samastersbaseball.co.za

Phone: +27 63 874 2095

Address: 15 Innovation Drive, Technopark, Stellenbosch, 7600, South Africa

This document is for informational purposes only. Specifications subject to change without notice.

