

Features of Maltese Fiberglass Cable Trays



Overview

Our Fiberglass Cable Tray gives you the load capacity of steel, plus the inherent characteristics afforded by Pultrusion Technology: non-conductive, non-magnetic, and corrosion-resistant. 1, making it ideal for caustic, harsh and marine environments. Eaton's B-Line series Marine Rung allows stainless steel banding of cables for coast guard requirements. It. Creative Enduro's stringent quality standards and composites expertise produce the leading FRP cable ladder tray systems for corrosive and demanding conditions for offshore platforms, chemical plants, oil and metal refineries, water treatment plants and more. Having recently been ISO 9001 Certified, Real Safety offer High-quality composite solutions and excellent service, complying with customer specifications as well as. A fiberglass cable tray, also called an FRP cable tray or cable bridge in some regions, is a structural support system used to route and protect electrical and instrumentation cables. It is manufactured from fiber reinforced polyester or vinyl ester resin so it has high corrosion resistance, long.

Features of Maltese Fiberglass Cable Trays



We offer a wide range of cable tray systems to support tubing, electrical cables and instrumentation. Our cable trays are produced in fit for purpose materials like stainless steel, galvanized, aluminium and ...



Enduro fiberglass cable ladder tray is designed specifically to endure the harshest environments and increase operational safety. Our products undergo world-class, on-site, comprehensive testing to ...



It is manufactured from fiber reinforced polyester or vinyl ester resin so it has high corrosion resistance, long service life and low maintenance compared with traditional steel cable trays.



Technical data on fiberglass cable tray systems: beam types, load calculations (wind, snow, seismic), and splice plate design.



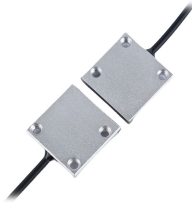
Cable trunking is an enclosure usually with a rectangular cross section, and with one removable or hinged side, that is used to protect cables and provide space for other electrical equipment.



Eaton B-Line Division Fiberglass Cable Tray systems are manufactured from glass fiber-reinforced plastic shapes that meet ASTM E-84, Smoke Density rating for polyester of 680, for vinyl ester 1025, ...



Our Fiberglass Cable Tray gives you the load capacity of steel, plus the inherent characteristics afforded by Pultrusion Technology: non-conductive, non-magnetic, and corrosion-resistant.



This process offers speed and consistency - making it the best method for producing high-volume linear fiberglass products that require constant cross sections.



The "Z" siderail profiles allow for easier cable loading and cover attachment or removal. All cable tray straight sections are available in polyester or vinyl ester resin.



Tested for ABS, NEMA and IEC, B-Line series fiberglass cable tray is ideal for harsh, marine and caustic environments. Learn about its corrosion resistant properties.

Contact Us

For more information, pricing, or custom solutions, please contact us:

Website: <https://samastersbaseball.co.za>

Email: sales@samastersbaseball.co.za

Phone: +27 63 874 2095

Address: 15 Innovation Drive, Technopark, Stellenbosch, 7600, South Africa

This document is for informational purposes only. Specifications subject to change without notice.

