

Explosion-proof distribution boxes for export



Explosion-proof distribution boxes for export



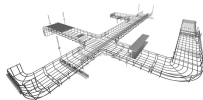
These are available in a range of materials including Stainless Steel, GRP & Sheet Steel from IP42 (Indoor) to IP 66 (Outdoor) Applications.



The Explosion Proof Distribution Box Manufacturer And Supplier MINMILE Delivers Stable Electrical Protection Equipment Built For Demanding Operating Conditions



Pepperl+Fuchs provides a specialized portfolio of Ex d (flameproof) and Ex tb (dust protection by enclosure) certified terminal boxes and junction boxes engineered for reliable use in explosion ...



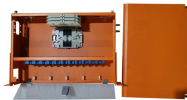
Durable Hexlon Explosion Proof Distribution Boxes and Electrical Enclosures, IECEx and ATEX certified for Zone 1 and Zone 2.



Explosion-proof distribution boxes are designed to safely control and distribute electrical power in hazardous environments, preventing ignition risks.



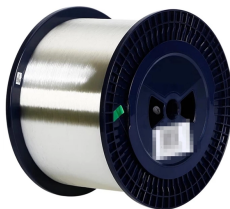
- Certified explosion-proof mark Ex d IIB T6 Gb, compliant with IECEx and ATEX standards.
- Customizable sizes, materials, and internal components to meet specific project requirements.
- ...



Warom specializes in manufacturing explosion-proof electrical equipment, with products covering explosion-proof lighting fixtures, explosion-proof distribution boxes, explosion-proof control ...



We supply certified explosion proof distribution box & Atex Transformer -Appleton, ATKON, CZ, CEAG, brands for safe and reliable industrial use.



Inatex is pleased to announce the release of the HRT97 Series IECEx explosion-proof LED floodlight, a high-performance hazardous area lighting solution designed for demanding industrial environments.

Contact Us

For more information, pricing, or custom solutions, please contact us:

Website: <https://samastersbaseball.co.za>

Email: sales@samastersbaseball.co.za

Phone: +27 63 874 2095

Address: 15 Innovation Drive, Technopark, Stellenbosch, 7600, South Africa

This document is for informational purposes only. Specifications subject to change without notice.

