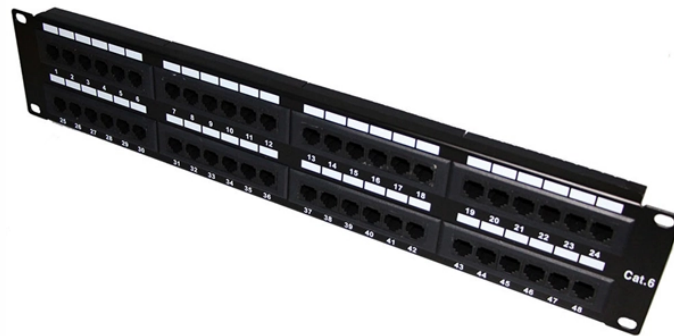


Explosion-proof distribution box aluminum casing



Explosion-proof distribution box aluminum casing



The ATEX series explosion proof enclosure is designed for intermittent explosive environments. Purchase a highly durable explosion proof enclosure, today!



Explosion proof control enclosures and junction boxes are designed to house arcing/ sparking devices in Division 1 rated areas. Rated NEMA 4/7/9 for UL and cUL Classified hazardous areas, are ...



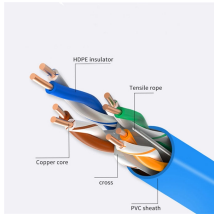
Available explosion protected empty enclosure with flame proof aluminum housing and increased safety aluminum housing, explosion proof enclosure can work as explosion proof junction box with terminal ...



ROSE supplies flameproof enclosures in various sizes and types for use in various gas groups and service-temperature ranges. The classic: The aluminium housing is also available as an explosion ...



Max.5 Cable Entries: Xapolu explosion proof junction box can be compatible with Max.5*3/4" NPT cable glands for intended wiring. The junction boxes come with 5 flameproof sealing stoppers as default!



The enclosures are certified Ex d IIB+H2 and Ex tb as well as "explosion-proof". They are available in many sizes, a wide range of operating elements and monitoring functions can be integrated. They ...



Operation Voltage High Pressure, Low Pressure
Size Customizable Shell Material Aluminum Alloy, Stainless Steel, Engineering Plast Function Power Distribution Equipment in Hazardous Application ...



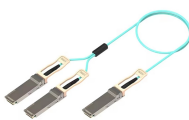
Available explosion protected empty enclosure with flame proof aluminum housing and increased safety aluminum housing, explosion proof enclosure can work as ...



Engineered for extreme environments, our explosion-proof distribution box features: Military-Grade Enclosure - Heavy-duty cast aluminum/stainless steel construction resists corrosion and impacts.



Features 1. The outer casing of the product is cast aluminum alloy ZL102. Adopting one-time die-casting process, the surface is smooth, the appearance is beautiful, the internal structure is high in density, ...



R. STAHL's technology provides explosion protection of the breaker itself. This clever design reduces the need for heavy cast metal enclosures and conduit seals. It minimizes safety risks caused by ...

Contact Us

For more information, pricing, or custom solutions, please contact us:

Website: <https://samastersbaseball.co.za>

Email: sales@samastersbaseball.co.za

Phone: +27 63 874 2095

Address: 15 Innovation Drive, Technopark, Stellenbosch, 7600, South Africa

This document is for informational purposes only. Specifications subject to change without notice.

