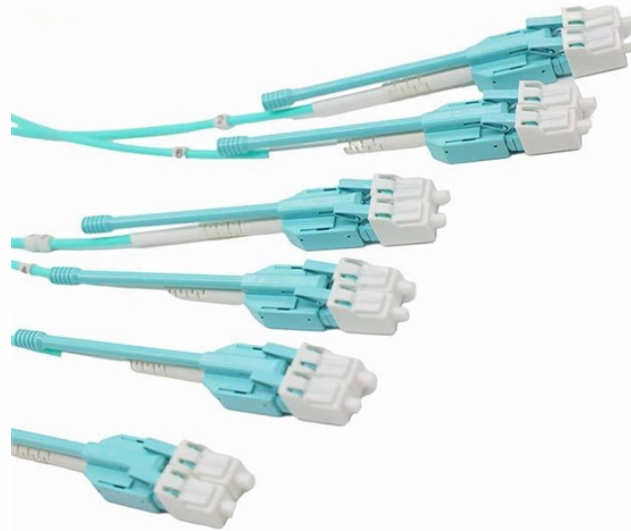


European Standard Electrical Cabinet Wiring



Overview

EN 60204-1 (Safety of Machinery - Electrical Requirements of Machines) sets out both the required safety standards and the type and colour of cable that should be used for wiring an electrical enclosure. This manual contains notices you have to observe in order to ensure your personal safety, as well as to prevent damage to property. The notices referring to your personal safety are highlighted in the manual by a safety alert symbol, notices referring only to property damage have no safety alert. The electrical tests mandated by UNOG must be performed by SECURELEC (see Section 17). For its own testing, the company must use a company other than Securelec. This service provision does not give rise to any entitlement to extra cost, and must be performed immediately after the work and before. All equipment and machinery across the EU is standardised through European Commission directives, including wiring. At. Colour identification by using common colours is permitted, provided that there is no risk of confusion and no GREEN or YELLOW is used, except in the two-colour combination GREEN-YELLOW. When using color codes for the identification of current conductors, it is recommended to use the following. The Group's environmental commitment is centred on 3 guiding

lines: taking on board environmental management in the running of its industrial sites, reducing the environmental impact of its products by eco-design, providing environmentally friendly solutions that contribute to energy savings. It is typically used to represent a junction or connection point in a circuit.

European Standard Electrical Cabinet Wiring



EN 60204-1 (Safety of Machinery - Electrical Requirements of Machines) sets out both the required safety standards and the type and colour of cable that should be used for wiring an electrical ...



The wiring must be performed using flexible T wires with end fittings arranged in ducts made from an insulating material with a cover (wiring ducts). It must be rigidly attached at multiple attachment points.



A green-yellow wire is not a mandatory requirement (note: but it is wise in practice). The NEN-EN-IEC 61439 also allows the colour coding of the ends of the wiring and the three-phase wires ...



Learn the European wiring diagram symbols used for electrical circuits. Understand the symbols to decipher diagrams and troubleshoot electrical issues.



All electrical installations should comply with Brazilian standard ABNT NBR 5410. This document lays down detailed rules governing all aspects of wiring and designing on installation.



Learn how to convert European wiring to American standard easily and safely. Follow our step-by-step guide and ensure proper electrical compatibility.



Learn about the European wiring diagram and how electrical systems are structured in different European countries. Find information on wiring standards and regulations.



Learn the European wiring diagram symbols used for electrical circuits. Understand the symbols to decipher diagrams and troubleshoot electrical issues.



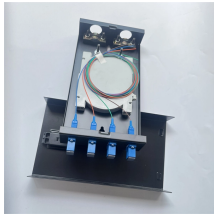
Working on an electrical engineering project for a country other than the one you were educated in is going to be a major challenge—especially when you consider that almost every ...



Discover the key standards for industrial electrical cabinet wiring, including wiring diagrams, circuit breakers, and safety practices with Groupe BEI.



We reserve the right to make changes and revisions to these typical circuit diagrams and interpretations of standards and directives without prior announcement.



EN 60204-1 (Safety of Machinery - Electrical Requirements of ...

Contact Us

For more information, pricing, or custom solutions, please contact us:

Website: <https://samastersbaseball.co.za>

Email: sales@samastersbaseball.co.za

Phone: +27 63 874 2095

Address: 15 Innovation Drive, Technopark, Stellenbosch, 7600, South Africa

This document is for informational purposes only. Specifications subject to change without notice.

