

Energy Internet of Type 10B1



Overview

The dry compact switchgear termination for voltage classes up to 550 kV is designed to be installed in cable entry housings of gas-insulated switchgear (GIS). It complies with IEC 62271-209 standard, which essentially specifies the interfaces between the termination and the switchgear. And within each of those categories we provide a choice of products that gives you plenty of technical flexibility. The heat-shrinkable terminations are. ELITE Roller Chains - The ideal solution for Industrial Drive Applications ELITE roller chains are engineered to deliver optimum wear resistance and exceed standard fatigue strength requirements, making them the robust and reliable choice for industrial applications. Every ELITE transmission roller. Chains are critical components in power transmission systems. Robust, quality chain drives extend mean time between failures, which reduces maintenance costs. Always ensure that the chemicals in cleaning agents used are. In case of any existing or perceived difference in contents between such versions and/or in print, the only prevailing document is the print of the Portable Document Format (PDF) version kept on a specific network drive within ETSI Secretariat. In most cases, Mouser will gladly break.

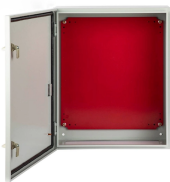
Energy Internet of Type 10B1



ELITE Roller Chains - The ideal solution for Industrial Drive Applications. ELITE roller chains are engineered to deliver optimum wear resistance and exceed standard fatigue strength requirements, ...



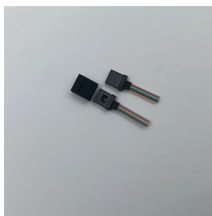
10B1 :: Heat-Shrinkable Terminations up to 123 kV
The heat-shrinkable terminations are suitable for all climates, areas, and environments, even severely polluted areas, as well as for all installation ...



10B1 TE Connectivity / Corcom Power Line Filters
10A 1/4 FASTON FLANGE MOUNT datasheet, inventory, & pricing.



The riveted type provides a very strong link, and has a similar fatigue strength as the other links in the chain. Dacrotized coating is the best anti-corrosion treatment for carbon steel chains, next to the use ...



In this paper, we propose the redefinition of EI, based on a comprehensive literature review, some latest trends and driving forces in the global energy industry, as well as its ...



External signal lines may be of any type, size or length normally entering via underground routes. There exists a risk of coupling to high voltage electricity lines or electric traction lines.



To realize renewable-energy-based electrification goals, a new concept-the Energy Internet (EI)-has been proposed, inspired by the most recent advances in information and ...



Stainless steel chains are used mainly in the food and beverage industry or for applications in which chains require regular cleaning. The materials used in ELITE chains enable them to be used in acidic ...



Details for well RW 10B1-26B | API # 43-047-546590000 | operated by Qep Energy Company in Uintah County, UT



Standard Number of Strands 1 Material Carbon Steel Internal Special Features No Chain Type ISO Price Unit EA Order in Multiples of 1 Minimum Order Quantity 1 Plate Shape Curved Inch - Metric ...

Contact Us

For more information, pricing, or custom solutions, please contact us:

Website: <https://samastersbaseball.co.za>

Email: sales@samastersbaseball.co.za

Phone: +27 63 874 2095

Address: 15 Innovation Drive, Technopark, Stellenbosch, 7600, South Africa

This document is for informational purposes only. Specifications subject to change without notice.

