

# Electronic-Optical Module Solution



## Overview

Thin-film filter and PLC based AWG for multiplexing, a full suite of components for optical amplification use, optomechanical or MEMS-based switches for protection or surveillance application, Tap PD for power monitoring and VOA for power management, circulator for. Thin-film filter and PLC based AWG for multiplexing, a full suite of components for optical amplification use, optomechanical or MEMS-based switches for protection or surveillance application, Tap PD for power monitoring and VOA for power management, circulator for. SCALE CPO solution is the industry's first OCI MSA capable platform and built with GF's proven silicon photonics technology MALTA, N., May 4, 2026 - GlobalFoundries (Nasdaq: GFS) (GF) today announced the introduction of its SCALE™ optical module solution for co-packaged optics (CPO). GF's SCALE. MALTA, N. According to the company, the Silicon photonics Co-packaged Advanced Light Engine (SCALE) solution is the industry's first Optical Compute Interconnect Multi-Source Agreement (OCI. Enter Co-Packaged Optics (CPO), a transformative architecture where the optical engine moves inside the switch ASIC package. The tasks and solutions are diverse and range from classic lenses and high-performance lighting modules to

innovative solutions such as optical modules for wavefront manipulation. With our expertise, we support. Integrated circuits and reference designs help you create a smaller and faster optical module design used in high-bandwidth data communication applications. Whether you are creating a 100-Gbps or 400-Gbps, small form-factor pluggable (SFP) module, SFP+ transceiver, XFP module, CFP, X2/XENPAK module.

## Electronic-Optical Module Solution



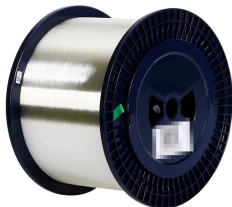
MALTA, N.Y., May 4, 2026 – GlobalFoundries (Nasdaq: GFS) (GF) today announced the introduction of its SCALE™ optical module solution for co-packaged optics (CPO). GF's SCALE ...



Everything you need to build an optical network from end-to-end.



CPO optical modules put optical and electronic parts together. This helps data move faster and saves power. They make the signal path much shorter, from centimeters to millimeters. This can ...



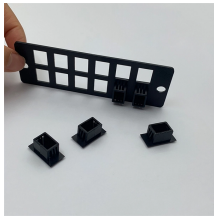
Design requirements Modern optical module designs often require: Reduced power consumption to control and limit module temperature rise. Dynamic and precise control of laser diodes to regulate ...



GlobalFoundries Unveils SCALE™ Optical Module Solution: Redefining AI Data Center Interconnects  
GF Sets New Standard by Exceeding OCI MSA Specifications for Co-Packaged Optics ...



The SCALE CPO solution uses both coarse and dense wavelength-division multiplexing (CWDM and DWDM) for bi-directional data transmission over each optical fiber, delivering significant ...



The 2.5D CPO technique is an innovative packaging technology that integrates optical and electronic components within a single package to enhance the performance of high-speed, high ...



Our expertise in this field provides you with a turnkey solution to all of your optoelectronics needs. We provide a complete range of services including design, modeling, alignment, packaging, Telecordia ...



Today, data centers use a separate approach for optics and electronics, in which optical modules are connected to switches and routers through high-speed electrical interfaces.



We manufacture individual optical and optoelectronics OEM modules for our customers. The tasks and solutions are diverse and range from classic lenses and high-performance lighting modules to ...

## Contact Us

For more information, pricing, or custom solutions, please contact us:

Website: <https://samastersbaseball.co.za>

Email: [sales@samastersbaseball.co.za](mailto:sales@samastersbaseball.co.za)

Phone: +27 63 874 2095

Address: 15 Innovation Drive, Technopark, Stellenbosch, 7600, South Africa

This document is for informational purposes only. Specifications subject to change without notice.

