

EDFA optical transmitter



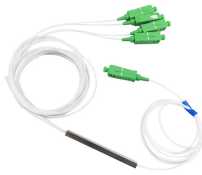
EDFA optical transmitter



The MX-T-EDFA is a highly integrated, yet simple device specifically designed for Cable Telecommunication Systems deploying RFoG or RF Overlays in the FTTx environment with ...



The emergence of EDFA has led to a revolution in optical communication technology, playing an important role in postal and telecommunications, cable television, and computer network systems ...



We are a pioneer in developing advanced laser and amplifier technologies, including nanosecond and sub-nanosecond pulsed fiber lasers for LIDAR, ultra-compact picosecond and femtosecond lasers, ...



The EDFA is booster amp for long haul transmission networks or FTTH distribution networks. This optical amplifier is packaged in a 19" rack mount housing to provide a complete optical ...



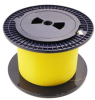
This series of EDFA offers a flexible and low-cost solution for a CATV systems large coverage area. The MX-A5400 series EDFA's are a high performance, multiple optical output EDFA's designed for ...



Our engineers has over 14 years experience designing complex fiber optic and electronic circuits. Our technical support and sales personnel have over 8 years experience working in CATV networks.



Invented in 1987, EDFA is now most commonly used to compensate the loss of an optical fiber in long-distance optical communication. Another important characteristic is that EDFA can ...



Overview PPC's Erbium Doped Fiber Amplifier (EDFA) is an optical amplifier that is used to boost optical signals carried through a fiber optic communication system. The power of a data transmitter may be ...



ASTEL Erbium Doped Fiber Amplifier (EDFA) is specifically designed with high power high performance and very stable pump laser. It provides a stable 1550nm fiber signal amplification in all kinds of ...

Contact Us

For more information, pricing, or custom solutions, please contact us:

Website: <https://samastersbaseball.co.za>

Email: sales@samastersbaseball.co.za

Phone: +27 63 874 2095

Address: 15 Innovation Drive, Technopark, Stellenbosch, 7600, South Africa

This document is for informational purposes only. Specifications subject to change without notice.

