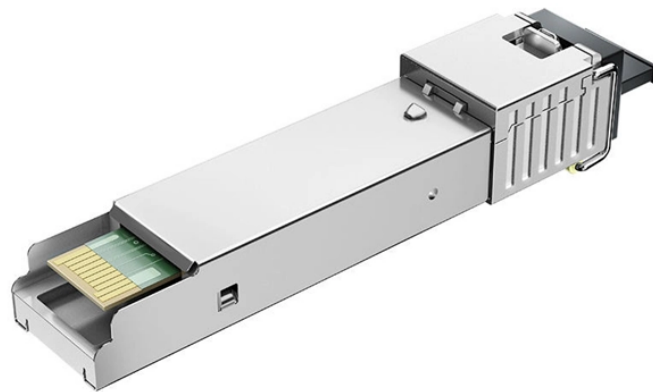


Does low-voltage wiring require cable trays



Overview

The use and installation of cable trays are covered by OSHA in 29 CFR 1910.305(a)(3) and within various provisions of the National Electric Code (NEC). When properly planned, installed, and serviced, cable trays provide safe routing of power, low voltage control, data . NEC Article 392 explains cable trays, their components, appropriate wiring methods for cable trays, and instances where they are and are not permitted for use. Here is the summary of the main points found in NEC Article. A cable tray system is a structured assembly used to support and organize insulated electrical cables for power distribution, communication, and control signals. By. The reorganized NEC (NFPA 70) Chapter 7 limited energy articles, paired with TIA-569-E pathway requirements, define how these systems must coexist in modern installations, guiding everything from tray layout to barrier use to mixed-voltage routing. A label maker for clearly labeling each cable, making it easy to identify its purpose.

Does low-voltage wiring require cable trays



Equipped with a removable **Mounting Plate** inside the enclosure, enabling customized drilling and secure component mounting.

Best Practice: Use separate trays, conduits, or divider systems to isolate voltage classes. Shielded cable can reduce—but not eliminate—required spacing. Shielding does not override NEC ...



Today, this article applies to any low-voltage systems wiring that is not covered by Articles 411-Low-voltage Lighting, or 725-Control, Signaling and Power Limited Circuits.



This type provides excellent ventilation and is typically used for low-voltage, data, and telecommunication cables that require frequent reconfigurations. A Channel cable tray is a narrow, ...



Data centers almost exclusively use cable tray (usually wire mesh or ladder type) for both power and data cables because cable density is high and changes are frequent.



Coaxial cable is typically CM-type, making it suitable for most low-voltage applications. A power-limited tray cable (PLTC) is covered by Article 725 and is a factory assembly of two or more insulated ...



Answer: Yes; cables are tied down in cable trays to keep the cables in the cable tray, to maintain spacing between cables, or to segregate or confine certain types of cables to specific locations.



When properly planned, installed, and serviced, cable trays provide safe routing of power, low voltage control, data, and telecommunications wiring. Cables in these trays are easy to mark, find, and remove.



Cables rated 600 volts or less can be installed together in the same cable tray without additional separation, provided they meet the NEC requirements for fill and support . Cables and ...



Utilize cable trays or conduits: Employ cable trays or conduits to protect cables from physical damage and to keep them organized. This is especially important in industrial environments where cables ...



Utilize cable trays or conduits: Employ cable trays or conduits to protect cables from physical damage and to keep them organized. This is especially important in ...



Discover a professional 5-step guide on how to choose the right cable tray for low voltage system. Learn about types, sizing, standards for reliable installations.

Contact Us

For more information, pricing, or custom solutions, please contact us:

Website: <https://samastersbaseball.co.za>

Email: sales@samastersbaseball.co.za

Phone: +27 63 874 2095

Address: 15 Innovation Drive, Technopark, Stellenbosch, 7600, South Africa

This document is for informational purposes only. Specifications subject to change without notice.

