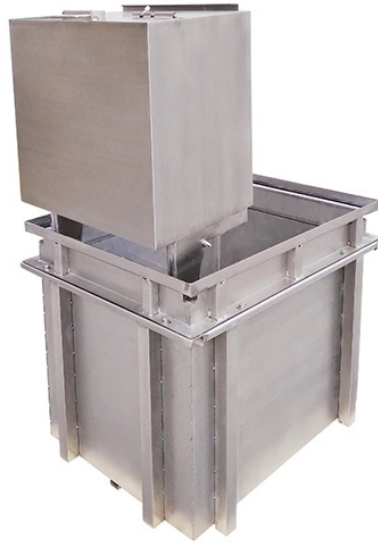


Distance between overhead fiber optic cables and power lines



Overview

The National Electrical Code establishes specific minimum distances when communications cables must run near power and light circuits. This practice is mandatory for two distinct reasons: ensuring the safety of the structure and its occupants, and preserving the integrity of sensitive data. Overhead fiber optic cable is an optical cable installed on poles. Aerial installation is generally much less costly than underground construction also. This comprehensive guide delves into the installation requirements, explores the two primary cable types—self-supporting and messenger-supported—and offers practical. Need some clarification about NEC 770.

Distance between overhead fiber optic cables and power lines



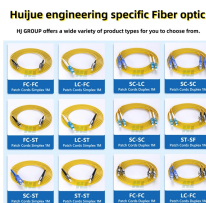
Outside plant cables often span distances longer than the limits of manufactured cables (5-15 km typically), Deploying cables of lengths >5km can be difficult, so cables may need to be spliced to ...



All-Dielectric Self Supporting (ADSS) cables can be erected in close proximity to power transmission lines. This of course, allows for pole sharing, which of course, reduces installation costs and speeds ...



Fiber optic is not impacted by the proximity with the power cable. There is no clearance required for this application. On the other hand, when fibre is run with a transmission line with towers, ...



The distance between poles of overhead lines is 25-40 meters in the urban area, and 40-50 meters in the suburbs, and no more than 67 meters in other sections. Overhead fiber optic cable ...



Fiber optic cables transmit data using pulses of light, making them entirely immune to electromagnetic interference. Consequently, fiber optic cables do not require the same minimum separation distances ...



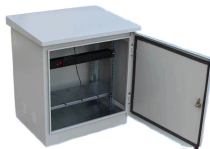
This comprehensive guide delves into the installation requirements, explores the two primary cable types—self-supporting and messenger-supported—and offers practical insights to ...



The minimum safe distance from a power line depends on the voltage, the type of activity, and what's nearby, but the most widely recognized baseline is 10 feet for any person or piece of ...



Can someone tell me how much should be the minimum clearance to be maintained between Optical fiber cable and High Tension Power Cable both in underground installation and in ...



This comprehensive guide delves into the installation requirements, explores the two primary cable types—self-supporting and messenger ...



In gen-eral, it consists of an imaginary box, 30-inches square, extending at least 40 inches above the highest communications cable or other facility and 40 inches below the lowest ...



So maybe for fulfilling the spacing requirements of NESC, we should take the spacing between the center of power cable to the center of fiber optic cable. However, it would make more ...

Contact Us

For more information, pricing, or custom solutions, please contact us:

Website: <https://samastersbaseball.co.za>

Email: sales@samastersbaseball.co.za

Phone: +27 63 874 2095

Address: 15 Innovation Drive, Technopark, Stellenbosch, 7600, South Africa

This document is for informational purposes only. Specifications subject to change without notice.

