

Distance Module Optomechanics



Overview

Predicates for checking the validity of distance matrices, both condensed and redundant. Convert a vector-form distance vector to a square-form. K. Burge, *Field Guide to Optomechanical Design and Analysis*, (SPIE Press, 2012): Will be handed out on CD. Video stream, log in at edu/user (need username and password). Optomechanical design is the subdiscipline of optical design that focuses on integrating optical components into the mechanical structures that hold or move them while minimizing the impact of structural, dynamic, and thermal loads on optical performance. Intended for practicing optical and mechanical engineers whose work involves both fields, this SPIE Field Guide describes how to mount optical components, as well as how to analyze a. Level: Introductory Length: 24 hours Format: Online Intended Audience: Engineers who need to solve optomechanical design problems. The emphasis is on providing techniques for rapid estimation of optical system performance.

Distance Module Optomechanics



Calculate the driving distance and directions including major highways and cities between stops to check along the way!



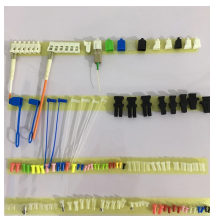
Intended for practicing optical and mechanical engineers whose work involves both fields, this SPIE Field Guide describes how to mount optical components, as well as how to analyze a given design.



Free calculators to compute the distance between two coordinates on a 2D plane or 3D space. Distance calculators for two points on a map are also provided.



Engineers who need to solve optomechanical design problems. Optical designers will find that the course will give insight into the mechanical aspects of optical systems. The course will also interest ...



Content subject to KCVS terms of use. [Click here](#) to see our land acknowledgement. © The King's Centre for Visualization in Science.



Field Guide to Optomechanical Design and Analysis Optomechanics is a field of mechanics that addresses the specific design challenges associated with optical systems. This Field Guide ...



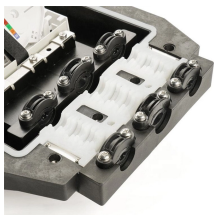
An optomechanical methodology - Yuming Shen.



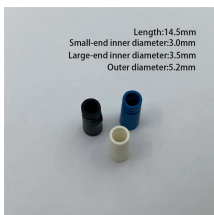
Simply enter any desired location into the search function and you will get the shortest distance (air line) between the points, the route (route planner) as well as all important information.



Distance calculator can estimate shortest distance between any two cities or locations. Know the distance you are going to cover before heading out to a new city.



Distance calculator helps you to find the distance between cities and calculate the flying distance in both kilometers and miles.



Distance Learning students must find some peer and request a review. The posted review forms should be used. The goals of the review are to uncover weakness and to build strength in the technical ...



Distance computations (`scipy.spatial.distance`) #
Function reference # Distance matrix computation
from a collection of raw observation vectors stored
in a rectangular array.



The basic idea is to change the distance from the
lens to the light-sensitive surface (matrix or film)
providing focus. This can be achieved by moving
either the lens or the light-sensitive ...



Slow Map data ©2026 Google Terms 10 km



Click Calculate Distance, and the tool will place a
marker at each of the two addresses on the map
along with a line between them. The distance
between them will appear just above the map in
both miles ...



Official MapQuest website, find driving directions,
maps, live traffic updates and road conditions.
Find nearby businesses, restaurants and hotels.
Explore!



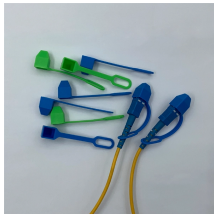
Optomechanical design is the subdiscipline of
optical design that focuses on integrating optical
components into the mechanical structures that
hold or move them while minimizing the impact of
...



Optical designers will find that the course will give insight into the mechanical aspects of optical systems. The course will also interest those managing projects involving optomechanics.



Whether you're measuring the distance between two cities, towns, villages, or even precise street addresses, this tool provides accurate results in both kilometers (km) and miles (mi).



Distance calculator helps in calculating mileage and distance between two cities, places, locations, points, zipcodes, coordinates, or addresses on map.

Fall 2016 Course Information Textbooks Distance Learning Lectures Homework Solutions
 Class notes are available for download at this website. Classes are recorded and can be viewed by downloading the video as above. Local students should see Prof. Burge for the password. See more on wp.optics.arizona.edu.

```

.b_imgcap_alttitle p
strong, .b_imgcap_alttitle .b_factrow strong{color:#767676}#b_results .b_imgcap_alttitle{line-height:22px}.b_imgcap_alttitle{display:flex;flex-direction:row-reverse;gap:var(--mai-smtc-padding-card-nested-default)}.b_imgcap_alttitle
.b_imgcap_img{flex-shrink:0;display:flex;flex-direction:column}.b_imgcap_alttitle
.b_imgcap_main{min-width:0;flex:1}.b_imgcap_alttitle
.b_imgcap_img>div,.b_imgcap_alttitle .b_imgcap_img a{display:flex}.b_imgcap_alttitle
.b_imgcap_img img{border-radius:var(--mai-smtc-corner-card-default)}.b_hList
img{display:block}.b_imagePair ner img{display:block;border-radius:6px}.b_algo
.vtv2 img{border-radius:0}.b_hList .cico{margin-bottom:10px}.b_title .b_imagePair>
ner,.b_vList>li>.b_imagePair> ner,.b_hList .b_imagePair>
ner,.b_vPanel>div>.b_imagePair> ner,.b_gridList .b_imagePair> ner,.b_caption
.b_imagePair> ner,.b_imagePair> ner>.b_footnote,.b_poleContent .b_imagePair>
ner{padding-bottom:0}.b_imagePair> ner{padding-
bottom:10px;float:left}.b_imagePair.reverse> ner{float:right}.b_imagePair
.b_imagePair:last-child:after{clear:none}.b_algo .b_title .b_imagePair{display:block}.
b_imagePair.b_cTxtWithImg>*{vertical-align:middle;display:inline-
block}.b_imagePair.b_cTxtWithImg> ner{float:none;padding-
right:10px}.b_imagePair.square_s> ner{width:50px}.b_imagePair.square_s{padding-
left:60px}.b_imagePair.square_s> ner{margin:2px 0 0 -60px}.b_imagePair.square_s.r
everse{padding-left:0;padding-right:60px}.b_imagePair.square_s.reverse>
ner{margin:2px -60px 0 0}.b_ci_image_overlay:hover{cursor:pointer}
sightsOverlay,#OverlayIFrame.b_mcOverlay sightsOverlay{position:fixed;top:5%;left:
5%;bottom:5%;right:5%;width:90%;height:90%;border:0;border-radius:15px;margin:0
;padding:0;overflow:hidden;z-index:9;display:none}#OverlayMask,#OverlayMask.b_
mcOverlay{z-index:8;background-
color:#000;opacity:.6;position:fixed;top:0;left:0;width:100%;height:100%}Ansys

```

Contact Us

For more information, pricing, or custom solutions, please contact us:

Website: <https://samastersbaseball.co.za>

Email: sales@samastersbaseball.co.za

Phone: +27 63 874 2095

Address: 15 Innovation Drive, Technopark, Stellenbosch, 7600, South Africa

This document is for informational purposes only. Specifications subject to change without notice.

