

## Current during relay protection stage



## Current during relay protection stage



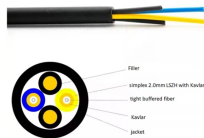
Three-Step Current Protection is a fundamental protection relay system for power networks. This protection relay combines instantaneous, time-delayed and backup protection for comprehensive ...



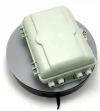
Motor Differential Protection Relay: Motor protection relays detect faults within motors by comparing the current entering and leaving the motor windings. They protect motors from issues like phase ...









When underfrequency protection is employed, two underfrequency relays connected with “AND” tripping logic and connected to separate voltage sources are recommended to enhance scheme security.



The level or type of protection offered by these relays is dependent on the specific application, and they utilize current and voltage transformers to monitor the system.



The effect is that more current flows through the connected protective relay causing its contractors to trip. The CB trips to separate the segment that is faulty from the whole system, ...

	<p>Relay protection discrimination by current is based on the fact that the short circuit current changes with the location of the fault because of the difference in impedance figures between the source and the ...</p>
	<p>Fundamental concepts and terminology will be taught using the electromechanical overcurrent relay as a foundation and then these concepts will be expanded to modern numerical relays.</p>
	<p>Definite time delay means that the protection operate time dose not change or depend on the fault type or the fault current magnitude. Inverse time delay, on the other hand, depends on the current ...</p>
	<p>The complete protection system for a line consists of three overcurrent relays for phase fault protection and one overcurrent relay for ground fault protection.</p>
	<p>As the protected components of the electrical systems have changed in size, configuration and their critical roles in the power system supply, some protection aspects need to be revisited (i.e. the use of ...</p>
	<p>When the protection is implemented using a current relay, the current value at which the relay should operate must be determined first. By means of the stabilizing voltage and the current setting, the ...</p>

## Contact Us

For more information, pricing, or custom solutions, please contact us:

Website: <https://samastersbaseball.co.za>

Email: [sales@samastersbaseball.co.za](mailto:sales@samastersbaseball.co.za)

Phone: +27 63 874 2095

Address: 15 Innovation Drive, Technopark, Stellenbosch, 7600, South Africa

This document is for informational purposes only. Specifications subject to change without notice.

