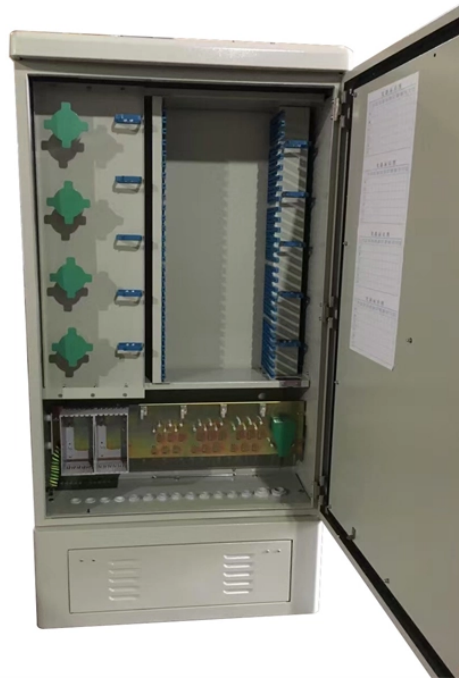


Construction and commissioning of low-voltage complete distribution boxes



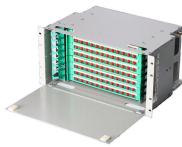
Construction and commissioning of low-voltage complete distribution



METHOD STATEMENT FOR Electric panel and distribution box installation and termination - Free download as PDF File (.pdf), Text File (.txt) or read online for free. This document provides a method ...



Inspect the panel for physical damage/loss of components. In any unlikely event of damage/loss, lodge insurance claim. Use crane / Forklift as applicable for shifting the transport sections. For this purpose ...



An informative guidebook that provides a look at how ARAMCO classifies and rates low-voltage distribution panelboards, inspects and evaluates them against known standards.



This handbook is meant to enable the commissioning personnel to efficiently complete pre-commissioning activities according to SEC Standard and specification before the equipment is ...



The Contractor shall be responsible for supply and installation of all power skirting complete with corner pieces, splices, end pieces, junction pieces, supply conduits, cover plates and power outlets as ...



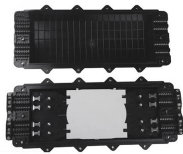
This post is supposed to provide distribution panel testing and execute commissioning while the inspection checklist is being completed.



A complete set of construction drawings and equipment technical documents should be provided. Construction organizing and technical, quality, safety, and fire protection measures should be in place.



The Electrical Installation Guide is dedicated to professionals who design, install, inspect, and maintain low to medium-voltage electrical installations in compliance with International Electrotechnical ...



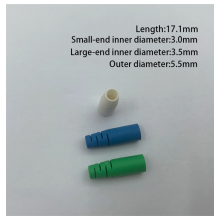
With the continuous improvement of my country's construction level and the continuous expansion of the application scope of electrical equipment, people have put forward higher requirements for the ...



Taking a certain construction project as an example, the article focuses on exploring the key technical points of low-voltage distribution system installation and debugging such as distribution ...



This commissioning procedure and technical specification outline the necessary work practices for the correct commissioning and maintenance of low voltage power and control distribution equipment.



This commissioning procedure and technical specification outline the essential practices for the proper commissioning and maintenance of low voltage distribution systems, motor control centers (MCC), ...

Contact Us

For more information, pricing, or custom solutions, please contact us:

Website: <https://samastersbaseball.co.za>

Email: sales@samastersbaseball.co.za

Phone: +27 63 874 2095

Address: 15 Innovation Drive, Technopark, Stellenbosch, 7600, South Africa

This document is for informational purposes only. Specifications subject to change without notice.

