

# Connection of down conductor grounding busbar



## Overview

NEC Article 250 outlines the specific wires and jumpers needed for a safe system: Connects the ground rod to the grounding bus bar in the main panel. Sized according to NEC Table 250. 66, based on service-entrance conductor size. This guide covers the essential principles and procedures for grounding an electrical panel per the National Electrical Code (NEC) Article 250. While often confused, grounding and bonding serve two separate safety functions: Built for electricians, apprentices, and electrical engineers who want. An electrical ground bus bar is a conductive bar made from materials like copper or aluminum, and it serves as the central point for connecting multiple grounding conductors in an electrical system. Grounding is one of the most crucial safety measures in electrical installations, and the bus bar. California's 2025 electrical code sets clear grounding and bonding rules for service equipment, solar systems, pools, and more.

## Connection of down conductor grounding busbar



California's grounding requirements come from the 2025 California Electrical Code (CEC), which took effect January 1, 2026, and applies to all new electrical installations and major ...



Ground bars provide a convenient, single-point grounding and bonding location. Conductors are welded to the bar using a nVent ERICO Cadweld exothermic connection or are mechanically fastened by ...



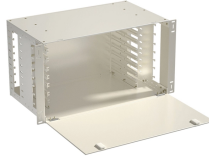
Learn what a ground bus bar is, how to size and select one, and how to install it to NEC/UL/TIA best practices for panels, racks, and telecom rooms.



Explore everything you need to know about the electrical ground bus bar, a critical component for safe and efficient electrical systems.



If you require guidance on selecting the right bus bar connector—whether for grounding, high-current distribution, or modular power systems—our expert technical support team is ready to assist.



The dimensions of the busbar that can be used to splice the common grounding electrode conductor and the taps have been clarified. The busbar must be ¼ in. thick by 2 in. wide, and whatever length ...



Connects the ground rod to the grounding bus bar in the main panel. Sized according to NEC Table 250.66, based on service-entrance conductor size. The safety wire running with branch circuits (bare ...



To mount a bus bar to an assembly structure, hardware (studs, holes, etc.) can be manufactured into the conductors. An alternative ground plane may be added as support for the bus bar assembly and to ...



For an ungrounded separately derived system, the equipment grounding conductor shall be connected to the grounding electrode conductor at, or ahead of, the system disconnecting means or overcurrent ...



Mount the grounding busbar on a non-conductive panel or directly on a metal panel with proper insulation to avoid unintended contact. Attach all ground wires from equipment, circuits, and ...

## Contact Us

For more information, pricing, or custom solutions, please contact us:

Website: <https://samastersbaseball.co.za>

Email: [sales@samastersbaseball.co.za](mailto:sales@samastersbaseball.co.za)

Phone: +27 63 874 2095

Address: 15 Innovation Drive, Technopark, Stellenbosch, 7600, South Africa

This document is for informational purposes only. Specifications subject to change without notice.

