

Connecting the low-voltage busbar



Overview

Transformer low voltage side copper busbar connection In this video, we dive deep into the essential techniques and best practices for connecting copper busbars on the low voltage side of transformers. The main busbar and branch busbars supply and distribute the energy. Creating busbars generally involves machining, bending and shaping which require a high degree of expertise to avoid weakening the bars or creating stray. Reliable components and systems are essential in ensuring smooth power distribution in buildings and industrial plants. With SIRIUS, SENTRON, SIVACON and ALPHA, we offer an innovative portfolio for standard-compliant and demand-oriented applications. Efficient engineering tools and innovative. nVent ERIFLEX Flexibar cross sections are formed from multiple layers of thin electrolytic copper insulated with a high-resistance, self-extinguishing PVC or silicone compound. These. IEC 61439 is a standard developed by the International Electrotechnical Commission (IEC) that covers design verification for low-voltage electrical products and assemblies.

Connecting the low-voltage busbar



Flexibar advanced insulation offers an even safer option, which is low-smoke, flame-retardant and halogen-free. These flexible busbars can be bent, folded or twisted. They offer a very small bending ...



Transformer low voltage side copper busbar connection In this video, we dive deep into the essential techniques and best practices for connecting copper busbars on the low voltage...



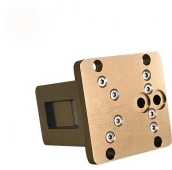
Modern power distribution increasingly relies on modular busbar systems for efficient and safe electrical wiring. A low-voltage Enclosed busbar system uses conductive bars (instead of ...



Our busbar systems for electrical installations offer a particularly easy way of fitting distribution systems with electrotechnical components. The modular design saves space, while quick assembly contacts ...



I'm highly specialized in the design of LV/MV switchgear and low-voltage, high-power busbar trunking (<6300A) in substations, commercial buildings and industry facilities.



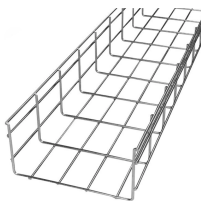
The object for this guide is to provide an easily understood document, aiding interpretation of the requirements to which Busbar Trunking Systems are designed and how they should be safely ...



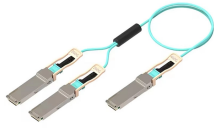
Sizes of The Contact Areas
Contact Pressure
Condition of The Contact Areas
Machining Copper Bars
Bending Busbars
It is strongly recommended that a full-scale drawing is made of the bars, in particular for bends and stacking of bars. The bars are separated by their thickness “e”. The total centre line length before bending is the sum of the straight parts ($L1 + L2$) that are not subject to any distortion and the length of the curved elements on the neutral line ...
See more on [electrical-engineering-portal](#).
`.sb_doct_txt{color:#4007a2;font-size:11px;line-height:21px;margin-right:3px;vertical-align:super}.b_dark`
`.sb_doct_txt{color:#82c7ff}`siemens



This standard covers busbars used for low-voltage assemblies, power distribution, photovoltaic power systems, and electrical energy control. The IEC 61439 busbar standard also ...



Learn how low voltage switchgear design balances busbar current rating, cabinet space, heat management, and modular construction for U.S. and European projects. This guide explains ...



These guidelines govern the busbar processing and installation procedures for all low-voltage switchgear and power distribution enclosures manufactured by our facility.



This comprehensive guide explores best practices for busbar insulator placement in electrical cabinet design, covering material selection, spacing requirements, thermal management ...

Contact Us

For more information, pricing, or custom solutions, please contact us:

Website: <https://samastersbaseball.co.za>

Email: sales@samastersbaseball.co.za

Phone: +27 63 874 2095

Address: 15 Innovation Drive, Technopark, Stellenbosch, 7600, South Africa

This document is for informational purposes only. Specifications subject to change without notice.

