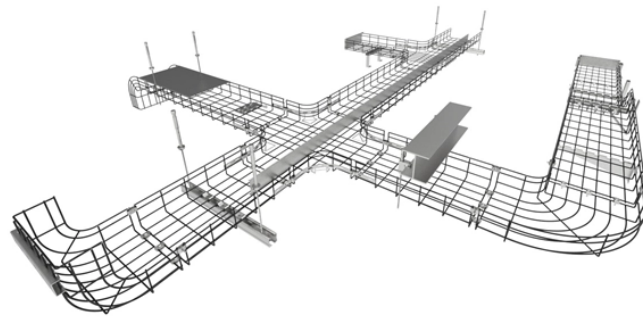


Congo optical cable 24 cores



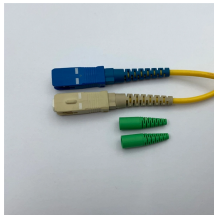
Congo optical cable 24 cores



The optical fiber elements are typically individually coated with layers and contained in a protective tube suitable for the environment where the cable will be deployed.



What is the structure of a 24-core GYTY53 fiber optic cable? A 24-core GYTY53 ...



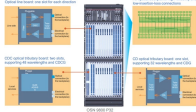
Single mode fiber optic cable is made up of a small diameter glass or plastic core surrounded by cladding, which is a layer of ...



SABA 24 cores distribution fiber optic cable is constructed with loose tube fibers, aramid yarn strength member, LSZH is metal free outdoor cable . Quality of the product is tested according to IEC Standards.



Applied Filters: Wire & Cable Fiber Optic Fiber
Optic Cables Number of Fibers = 24 Fiber ... Reset
All Please modify your search so that it will return
results. To use the less than or greater than
function, ...



24 Fiber MPO Cables deliver a high amount of fiber strands in a single connector, thereby reducing the amount of terminations and performance drop due to insertion loss.



These steel tape armored cables are suitable for installation for long haul communication and LANs, especially suitable for the situation of high requirements of moisture resistance.



Oufu has successfully delivered numerous large-scale projects over the past 20 years, covering fields such as optical cable deployment, urban renewal, railway projects, airport construction, 5G ...



The 24-Core Outdoor Single Mode Fiber Optic cable uses premium single mode fibers housed inside a loose PBT (polybutylene terephthalate) tube. Single mode fibers are ideal for long-distance ...



The 24 Core Outdoor Fiber Optic Cable is a type of optical fiber cable used for outdoor applications. It consists of 24 individual fibers that are protected by a durable and rugged outer jacket.



What is the structure of a 24-core GYTY53 fiber optic cable? A 24-core GYTY53 cable consists of fibers placed in loose tubes filled with water-blocking gel around a central strength member, usually a steel ...



Single mode fiber optic cable is made up of a small diameter glass or plastic core surrounded by cladding, which is a layer of reflective material. This small diameter core, typically around 9 microns ...

Contact Us

For more information, pricing, or custom solutions, please contact us:

Website: <https://samastersbaseball.co.za>

Email: sales@samastersbaseball.co.za

Phone: +27 63 874 2095

Address: 15 Innovation Drive, Technopark, Stellenbosch, 7600, South Africa

This document is for informational purposes only. Specifications subject to change without notice.

