

Compatible DML Single-Fiber Bidirectional Bolivian Supplier



Compatible DML Single-Fiber Bidirectional Bolivian Supplier



This single-mode fibers buying guide provides technical background, comparison of major types, selection criteria, and an overview of suppliers.



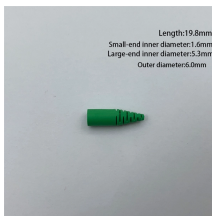
Single fiber bi-directional data links symmetric TX 9.953 Gb/s / RX 9.953 Gb/s with MAC function SFP package with SC/UPC/APC receptacle Single 3.3 V power supply Hot-pluggable capability High ...



Discover BiDi optical transceivers designed to transmit and receive data over a single fiber, maximizing existing infrastructure. These solutions help increase bandwidth capacity, reduce fiber requirements, ...



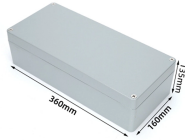
Single-fiber bidirectional Gigabit SFP modules with SC connector interface for legacy equipment compatibility. Offered in matched wavelength pairs covering 3km to ...



BiDi modules deliver a powerful approach to fiber savings and cost reductions through full-duplex communication over a single fiber strand. BiDi ...



Hot-swappable and compatible with various networking equipment for effortless upgrades. Meets stringent quality standards and is built to withstand diverse environmental conditions.



We manufacture a range of bidirectional SFP transceivers for applications supporting data transfer rates of 10/100/1000Mbps, 100Mbps, 1000Mbps, and 10Gbps. They are compatible with standard SFP ...



We also have Media Converter Chassis FIBER & COPPER SFP TRANSCEIVERS 1G, 10G, 25G, 40G and 100G Fiber SFP Transceivers Single Fiber BiDi (Bi-Directional SFP Transceivers) Copper RJ45 ...



Learn how to choose the right bidirectional SFP for single-fiber links. Compare wavelengths, distances, and compatibility to optimize your optical network.



Single-fiber bidirectional Gigabit SFP modules with SC connector interface for legacy equipment compatibility. Offered in matched wavelength pairs covering 3km to 40km distances, ideal for ...



BiDi modules deliver a powerful approach to fiber savings and cost reductions through full-duplex communication over a single fiber strand. BiDi modules are compatible with existing ...



The 25G BIDI SFP28 transceivers are designed to enable bi-directional 25G serial optical data communications using either 1270nm/1330nm wavelengths. These modules are ideal for use in 25G ...

Contact Us

For more information, pricing, or custom solutions, please contact us:

Website: <https://samastersbaseball.co.za>

Email: sales@samastersbaseball.co.za

Phone: +27 63 874 2095

Address: 15 Innovation Drive, Technopark, Stellenbosch, 7600, South Africa

This document is for informational purposes only. Specifications subject to change without notice.

