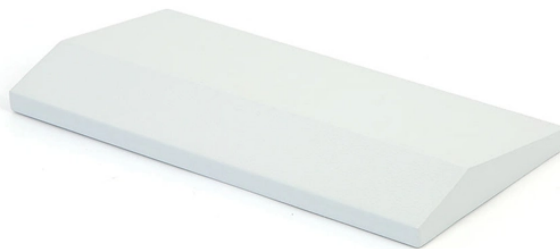


# **Communication Fiber Optic Cable Handover Diagram**



## Communication Fiber Optic Cable Handover Diagram



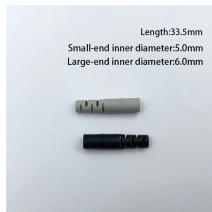
Learn how fiber optic networks distribute data from central offices to end users. This diagram highlights media converters, switches, and cable types.



Fiber optic cable sequential numbers are required at each pole location and vault wall. Sequential numbers will identify conduit length, and slack left in vaults and at poles.



Technical Drawings Technical Resources BIM, CAD, Visio and PDF Files for Copper & Fiber Optic Cabling, Racks & Cabinets



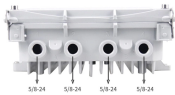
G OR QUANTITIES OF MATERIALS. THIS FLOW DIAGRAM IS SHOWN FOR CLARIFICATION OF CONNECTIO LOCATIONS AND CONDUCTOR TYPE. ALL CONNECTIONS AND SYSTEM ...



Handover Acceptance Client Representative  
Signature Date Contractor Representative  
Signature Date



Complete fiber optic cable handbook: decode GYTA53, GYFTCY, ADSS & all Chinese codes, full construction types, standards, diagrams and FAQ for engineers.



TL;DR: A fiber optic communication block diagram visually breaks down how data travels through fiber optic cables—from signal generation to transmission, amplification, and reception.



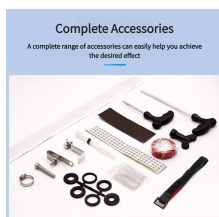
Fastest and most user-friendly fiber optic Network Management Software. Create fiber splice diagrams in few clicks and save weeks of work.



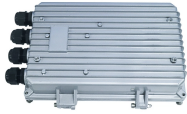
The three most common physical handoff types are electrical, single-mode fiber, or multi-mode fiber. Your choice of handoff type is often dictated by your throughput requirements, as well as the physical ...



The document describes the key components and functioning of a fiber optic ...



Learn how to design a fiber optic ring network with practical diagrams, topologies, and switch setup tips. Explore ring network switch options for industrial applications.



Cables - Aggregate cross-sectional area of cables in steel sleeve to be max 33 percent of the aggregate cross-sectional area of the sleeve. Cables to be rigidly supported on both sides of wall assembly.



The as-built drawing is an important handover document for maintenance teams to familiarize themselves with the implemented fiber route and network. - Download as a PDF, PPTX or view ...

## Contact Us

For more information, pricing, or custom solutions, please contact us:

Website: <https://samastersbaseball.co.za>

Email: [sales@samastersbaseball.co.za](mailto:sales@samastersbaseball.co.za)

Phone: +27 63 874 2095

Address: 15 Innovation Drive, Technopark, Stellenbosch, 7600, South Africa

This document is for informational purposes only. Specifications subject to change without notice.

