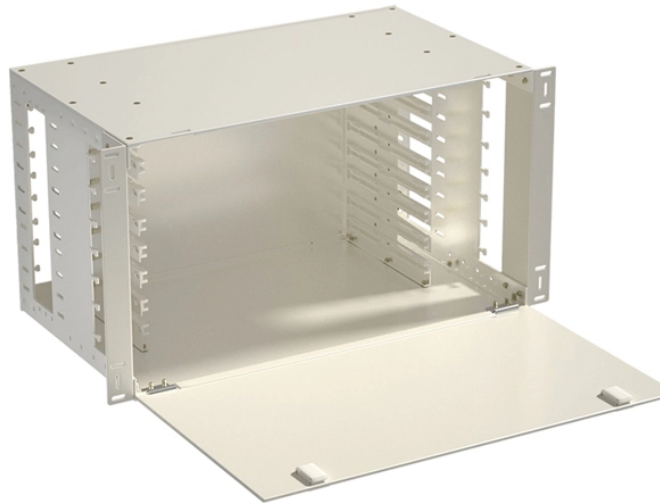


Columbia junction box 8-pin



Columbia junction box 8-pin



8-port, watertight junction box.



The 8-Port Junction Box employs a main cable running in close proximity to electronic equipment, then acts as a distribution point for independent cables to each device, allowing quick replacement or repair.



Gray Junction Box and Pull Box 16 Gauge Steel UL CSA Commercial Applications \$20.39



Steel Electrical Junction Box, Indoor& Outdoor Electrical Enclosure Box, Wall Mounted Waterproof& Dustproof Metal Box, Universal Electric Equipment Enclosure Box with Safety Locks and ...



8-Port Junction Box Teledyne Marine Cable Solutions (TCS) A heavy-duty junction box designed for use in high-risk environments where the cost of failure is significant.



Exploring options for columbia wall-mounted wiring box 8 cores? Navigate through our inventory and find the perfect fit!



Junction Box: 8-Port with LEDs, Homerun Connector: 12-pin M12 Male, 8-Ports: 3-pin M8 Female PNP, 8 Signal Contacts; 1 Channel per Port



Up to 16 I/O signals can be consolidated over a single home-run connection on the box. These junction boxes provide a rugged solution with an IP67 rating or greater, making them ideal for both indoor and ...



A surface mounted enclosure without entrance hubs which allows multiple conduits to be connected and wire splices made within. There are no downloadable resources for this product.

Contact Us

For more information, pricing, or custom solutions, please contact us:

Website: <https://samastersbaseball.co.za>

Email: sales@samastersbaseball.co.za

Phone: +27 63 874 2095

Address: 15 Innovation Drive, Technopark, Stellenbosch, 7600, South Africa

This document is for informational purposes only. Specifications subject to change without notice.

