

## Can transformers be placed in low-voltage cable trays



### Overview

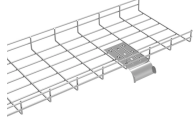
Avoid Electromagnetic Interference (EMI): Install the tray away from high-voltage power cables, transformers, motors, and other sources of electromagnetic interference. Straight Routes: Minimize unnecessary bends and elevation changes. Can Low Voltage Dry Type Transformers be mounted close to communication equipment and cables, or is there a danger of electrical interference?

Possible electrical interference produced by Low Voltage Transformers LV Transformers Applies to Low Voltage Transformers by SquareD/Schneider Electric. The use and installation of cable trays are covered by OSHA in 29 CFR 1910. 305(a)(3) and within various provisions of the National Electric Code (NEC). When properly planned, installed, and serviced, cable trays provide safe routing of power, low voltage control, data, and telecommunications. Question 1: Can mechanical utility piping or tubing containing water or compressed air be installed in cable trays with electrical cables?

Answer: No. Cable trays are a support system for electrical cables, power,

signal, and communication and optical fiber cables. NEC section 300-8 does not permit. Keep the shipping pallet attached to the transformer to assist with moving the unit to its final installation location. Verify that the nameplate matches the description from the building layout drawings (kVA, primary and secondary voltages, etc. Turn off the power supplying this equipment before servicing. While the bulk of the requirements do apply to what we commonly refer to as “high voltage”, NFPA 70 is also applicable to the wiring of low-voltage systems.

## Can transformers be placed in low-voltage cable trays



When properly planned, installed, and serviced, cable trays provide safe routing of power, low voltage control, data, and telecommunications wiring. Cables in these trays are easy to mark, find, and remove.



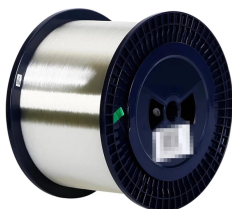
Mount any accessories prior to installing the transformer when using wall or ceiling (trapeze) mounting. Observe the four mounting hole locations in each enclosure base. Obtain the actual dimensions via ...



Install the transformer in a protected electrical circuit. Do not subject the transformer to voltage surges unless it is properly protected. Transformers are not tamper proof and should be installed in secured ...



For example, sometimes the trays are lower than 8 feet above the work surface and in close proximity to where unqualified workers routinely travel and work. The cable trays carry ...



Abstract: A discussion of the National Electrical Code (NEC) and National Electrical Safety Code (NESC) design considerations as applied to utility substations, including working clearances, cable ...



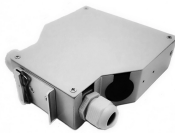
Question 1: Can mechanical utility piping or tubing containing water or compressed air be installed in cable trays with electrical cables? Answer: No. Cable trays are a support system for electrical cables, ...



In general, the low frequency magnetic field surrounding loaded Transformers is comparable to that surrounding other ordinary electrical distribution equipment, such as cable trays, ...



Avoid Electromagnetic Interference (EMI): Install the tray away from high-voltage power cables, transformers, motors, and other sources of electromagnetic interference.



High and low-voltage distribution rooms, transformer rooms, capacitor rooms, and control rooms should not have irrelevant pipes and lines passing through them. Distribution cabinets, tables, ...



Coaxial cable is typically CM-type, making it suitable for most low-voltage applications. A power-limited tray cable (PLTC) is covered by Article 725 and is a factory assembly of two or more insulated ...



When an employee must install or remove fuses with one or both terminals energized at more than 300 volts, or with exposed parts energized at more than 50 volts, the employer shall ensure that the ...



When fitting cable trays and their accessories, the products are cut on site to create changes of direction, adjust sections, etc. Damage can also occur during handling; as a result, both the ...

## Contact Us

For more information, pricing, or custom solutions, please contact us:

Website: <https://samastersbaseball.co.za>

Email: [sales@samastersbaseball.co.za](mailto:sales@samastersbaseball.co.za)

Phone: +27 63 874 2095

Address: 15 Innovation Drive, Technopark, Stellenbosch, 7600, South Africa

This document is for informational purposes only. Specifications subject to change without notice.

