

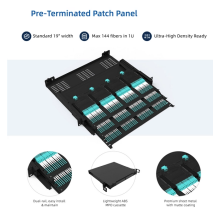
# **Campus Network Fiber Optic Hybrid Cable EML**



## Campus Network Fiber Optic Hybrid Cable EML



Using hybrid cable and a centralized power supply, PFCS simplifies the addition of small cells, Wi-Fi access points and IP cameras by distributing power and fiber within the same cable.



Discover the FS cabling infrastructure solution for universities, offering seamless, scalable, and reliable connectivity with ...



The University of Nevada Las Vegas (herein referred to as “UNLV”) Division 27 Campus Wiring Design Guide is for the use of all campus departments, architects, developers, Contractors and ...



EML technology has a long history of application in high-speed optical communications and is relatively mature. Its optical transmission and reception performance have been thoroughly ...



Campus fiber optic networks are the invisible foundation of modern university infrastructures. They enable innovative research, modern teaching and efficient administration. ...



Discover the FS cabling infrastructure solution for universities, offering seamless, scalable, and reliable connectivity with fiber optics, copper cables, and advanced power systems.



Bill of Quantities for campus network upgrade: fiber optic, CAT6, WiFi, IP-PBX, IP surveillance. College-level network engineering.



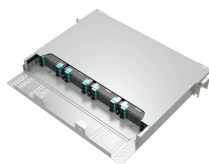
Thus, Hybrid Campus is a very common architecture in building secure, scalable and robust enterprise networks. Hybrid refers to the mixing of different platforms (e.g. Meraki MS switches and Catalyst 9k) ...



Welcome to my final year capstone project, where I've applied my knowledge and skills in network design to create a robust, scalable, and secure network infrastructure for a multi-campus university.



Designing a LAN for the campus use case is not a one-design-fits-all proposition. The scale of campus LAN can be as simple as a single switch and wireless AP at a small remote site or a large, ...



The hybrid ActiFi composite cable eliminates the need to pull separate cables for data and power, saving you valuable time. Watch how this installer deployed 11 ActiFi cables at once using ...

## Contact Us

For more information, pricing, or custom solutions, please contact us:

Website: <https://samastersbaseball.co.za>

Email: [sales@samastersbaseball.co.za](mailto:sales@samastersbaseball.co.za)

Phone: +27 63 874 2095

Address: 15 Innovation Drive, Technopark, Stellenbosch, 7600, South Africa

This document is for informational purposes only. Specifications subject to change without notice.

