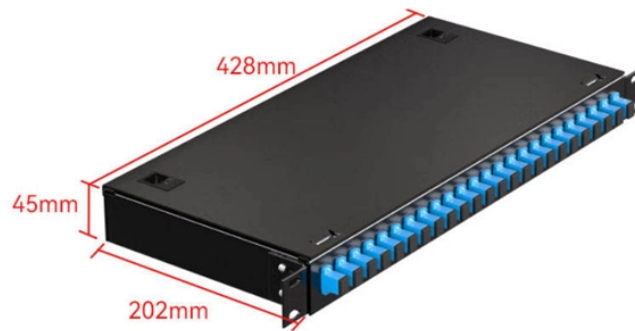


Cable tray underline flat iron



Cable tray underline flat iron



Refers to the approximate height of a cable tray used for specifying. Selecting a specific height will show cable trays with that height, as well as cable tray accessories compatible with that height.



MP Husky's cable tray selector for choosing the correct tray type (ladder, solid bottom, perforated, wire mesh) and size based on load, cable type and installation requirements.



We recently merged with Ocean-1, a market leader in the supply of ABS approved cable tray systems and related support products to the Marine, Offshore, Onshore, Rig, Shipbuilding and Oil & Gas ...



PlenaForm™ PF-TLINER 100 is a purposed-built solution that brings order, protection, and efficiency to cable management. Made from Formex™ GK-30 BK PolyPropylene with UL V-0 flammability rating, ...



From heavy power cable pathways on oil drilling platforms to data center cabling, explore the cable tray that's strong yet easy to install. Fast installation with dependable support.



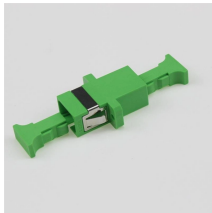
Flextray cable tray and accessories are available in a wide variety of finishes to meet the environmental or aesthetic requirements of customer installations. Use the list below to find the finish and suffix that ...



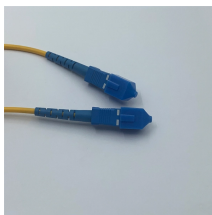
As a less-expensive alternative to conduit, and a stronger alternative than wire basket, and superior to generic tray, the Snap Track cable tray system saves on labor and reduces total installed costs.



Hubbell's NEXTFRAME® Ladder Tray is the effective and widely used cable runway that supports and delivers bundles of cable between cabinets, racks, and closets, along walls, and suspended from ...



Our wind certification report provides you with list of acceptable B-Line series cable tray supports, fittings and covers based off of the environmental conditions, cable loading, and type of cable tray in your ...



Choose from our selection of cable trays, including over 850 products in a wide range of styles and sizes. Same and Next Day Delivery.



After the steel cable tray has been manufactured and assembled, the entire tray is immersed in a bath of molten zinc, resulting in a coating of all surfaces, as well as all edges, holes and welds.



Our cable tray systems securely hold and protect cables and come in many models and sizes, solid bottom and ventilated.

Contact Us

For more information, pricing, or custom solutions, please contact us:

Website: <https://samastersbaseball.co.za>

Email: sales@samastersbaseball.co.za

Phone: +27 63 874 2095

Address: 15 Innovation Drive, Technopark, Stellenbosch, 7600, South Africa

This document is for informational purposes only. Specifications subject to change without notice.

