

## Cable tray through-wall bolts



## Cable tray through-wall bolts



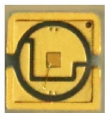
Cable tray length is selected based on the load to be supported, the distance between the supports (also referred to as the span), and handling and installation constraints.



Electrically trained specialists charged with installing cable support systems and cable trays. These instructions are based on the standards valid at the time of compilation (12/2023). Please read the ...



Our cable tray bolts are zinc plated have a cross-slot head and come with serrated flange nuts.



MINIMAL 2" x 2" STEEL WIRE MESH (16 GA.) SHALL BE ATTACHED TO BOTH SIDES OF THE WALL BY MEANS OF 1/4" HILTI TOGGLER BOLTS WITH 1-1/2" DIAMETER FENDER WASHERS ...



Cable Tray, 2" Depth x 4" Width x 10" Section, Material: Carbon Steel. Finish: Electroplated Zinc.



Cut, bend, and connect the wire mesh trays to route cable and hose in configurations such as curves, slopes, and tees. They are a lightweight option for organizing bundles of cable and hose while ...



Atkore's US Tray was established in 2012, as an American manufacturer of made-to-order cable trays that are built per NEMA standards and certified by UL. We offer modern, innovative, and technically ...



City Electric Supply offers a complete range of cable tray fittings and accessories, designed to provide secure and efficient cable management solutions for commercial, industrial, and residential ...



Cable Runway Wall Angle Support fastens ladder rack to a wall or other flat surface. This Wall Angle Support, LWASK24BLK item fits 24.00 with a material of Steel color Black.



Quest offers a full line of cable tray accessories. This accessory is for the secure joining of curved tray corners....

## Contact Us

For more information, pricing, or custom solutions, please contact us:

Website: <https://samastersbaseball.co.za>

Email: [sales@samastersbaseball.co.za](mailto:sales@samastersbaseball.co.za)

Phone: +27 63 874 2095

Address: 15 Innovation Drive, Technopark, Stellenbosch, 7600, South Africa

This document is for informational purposes only. Specifications subject to change without notice.

